



Weather Briefing Winter Storm Possible December 26 - 27, 2012

Prepared 330 PM EST – Tuesday December 25, 2012

Gary Szatkowski

NOAA's National Weather Service

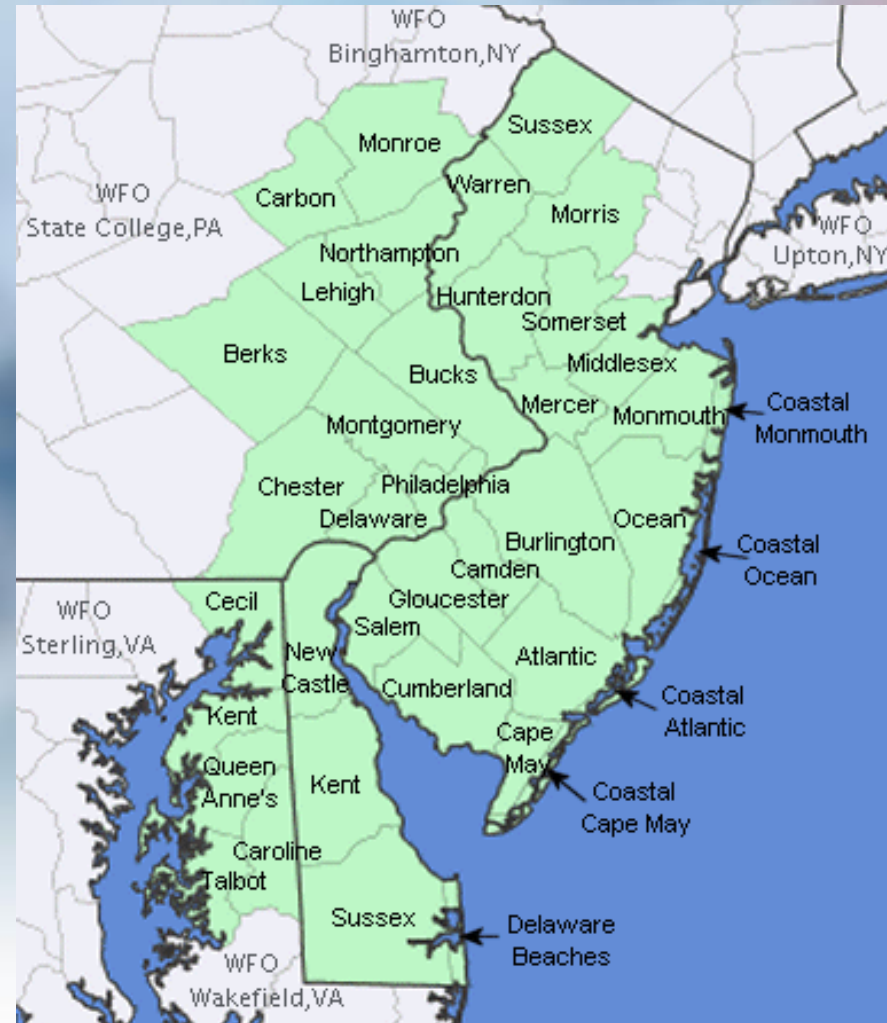
Philadelphia/Mt. Holly NJ Forecast Office

<http://www.erh.noaa.gov/phi/>



Purpose of Briefing

- Briefing #2 for event
- Promote situational awareness for emergency management community & partners
- Provide guidance for planning efforts
- Briefing applies to Mount Holly service area – shaded in green on map



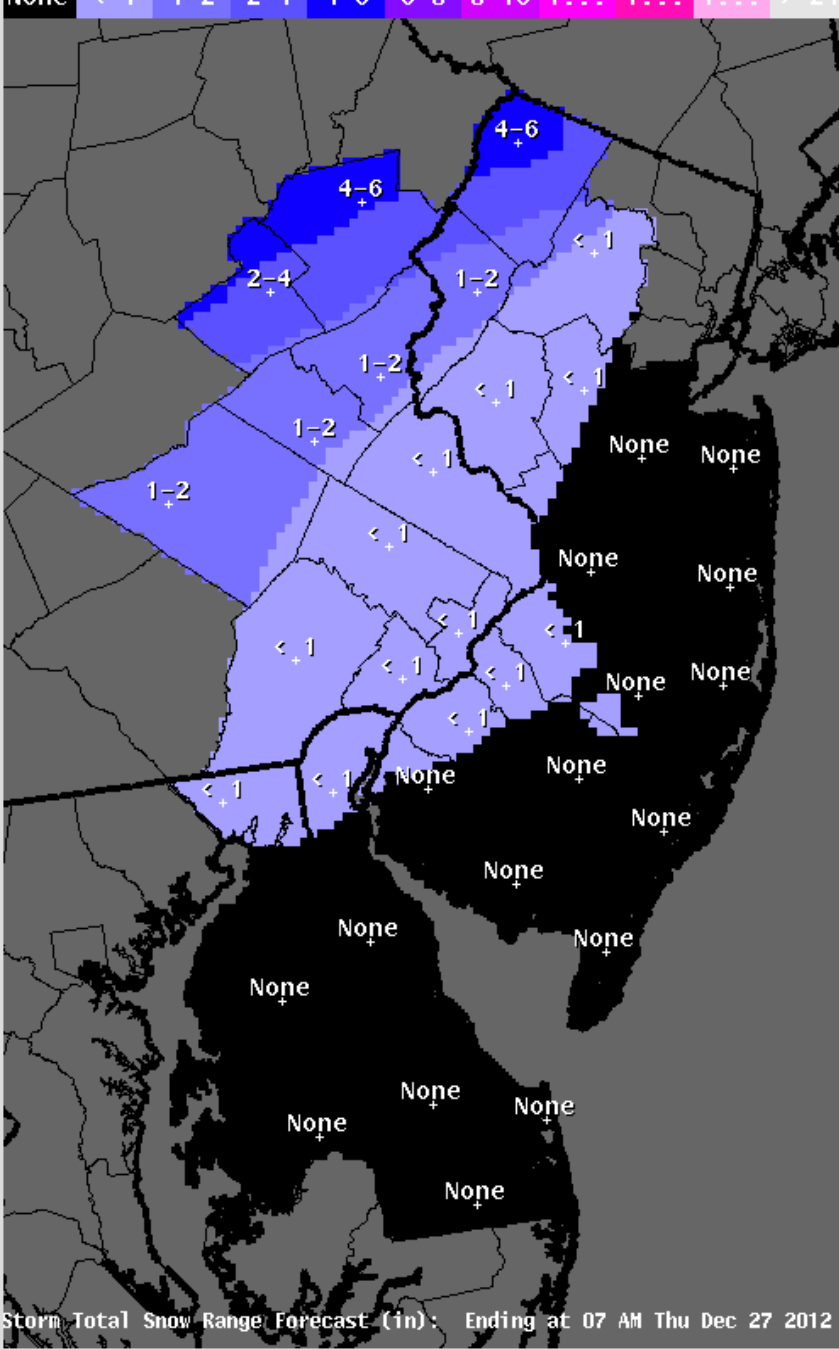
Executive Summary

- A very strong winter storm will bring multiple weather threats to the region starting during the day Wednesday, continuing Wednesday night & into Thursday morning.
- Wintry weather (snow & ice) mainly in the northwest portions of our forecast area. Areas closer to the I-95 corridor will start off with a wintry mix then transition to rain.
- Heavy rainfall will produce a threat of inland flash flooding across area creeks and streams with minor to moderate river flooding possible along mainstem river.
- Strong gusty winds will occur with this storm. Wind gusts up to 45 miles an hour are possible over inland locations. Wind gusts up to 55 miles an hour are possible close to the Atlantic Coast.
- Minor coastal flooding is likely along the Atlantic Coast, Delaware Bay & Raritan Bay. Moderate coastal flooding is possible.
- Strong thunderstorm are expected over Delaware, southern New Jersey, & northeast Maryland. Strong damaging wind gusts will be the main thunderstorm threat.
- For details on the particular weather threat, please see the following slides.
- Monitor our webpage for the latest weather forecast, as well as watches & warnings.
- You can always get the latest weather forecast & warning information at www.erh.noaa.gov/phi

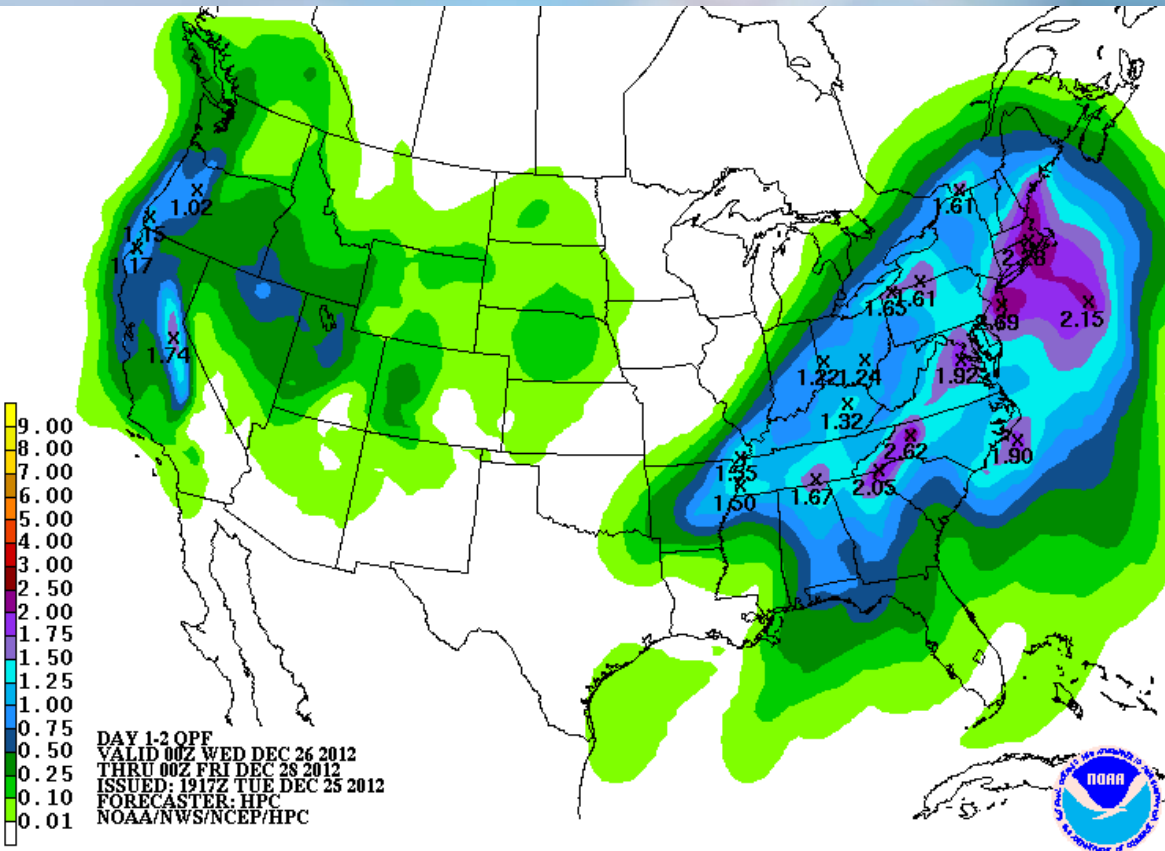


Wintry weather

- Up to six inches of snow, as well as up to one quarter inch ice accumulation from freezing rain are possible up in the Poconos and far northern NJ



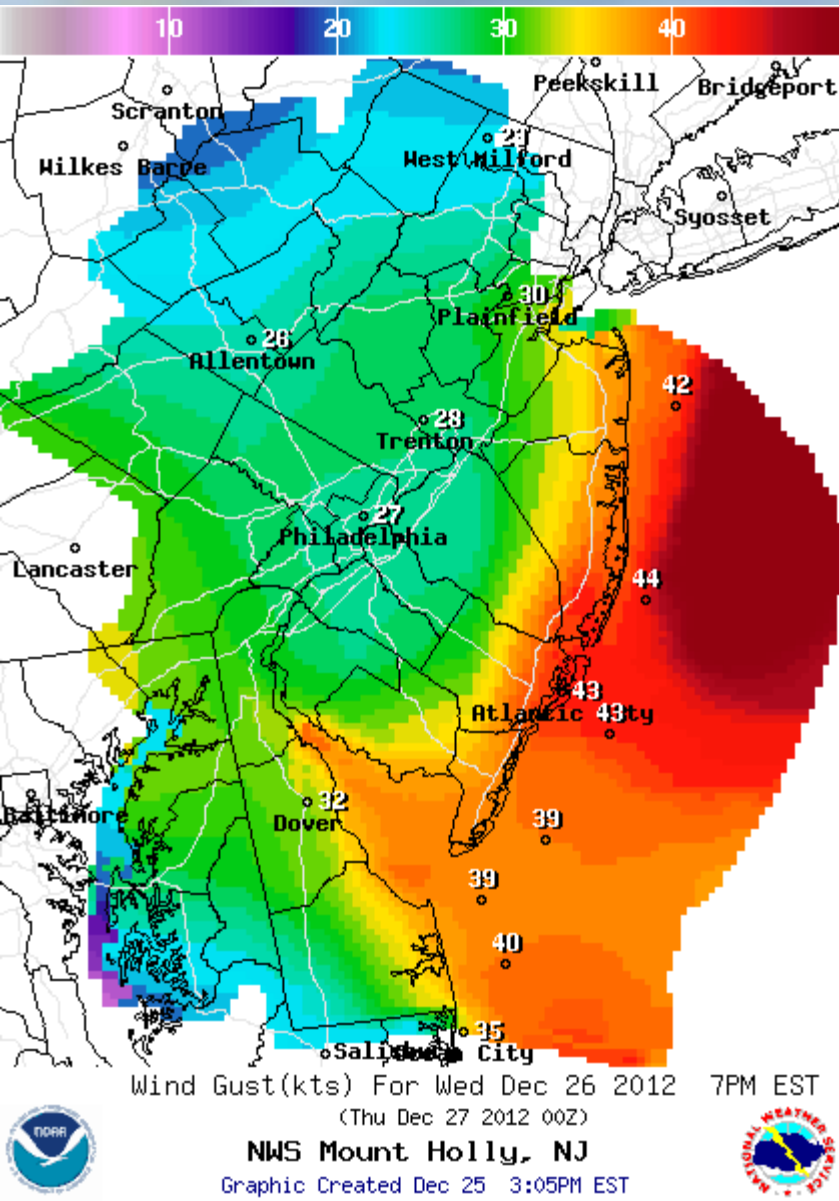
Heavy rainfall



- Rainfall amounts of 1.5 to 2.5 inches are expected.
- Flooding of local creeks and streams is expected.
- Minor to moderate river flooding is possible.

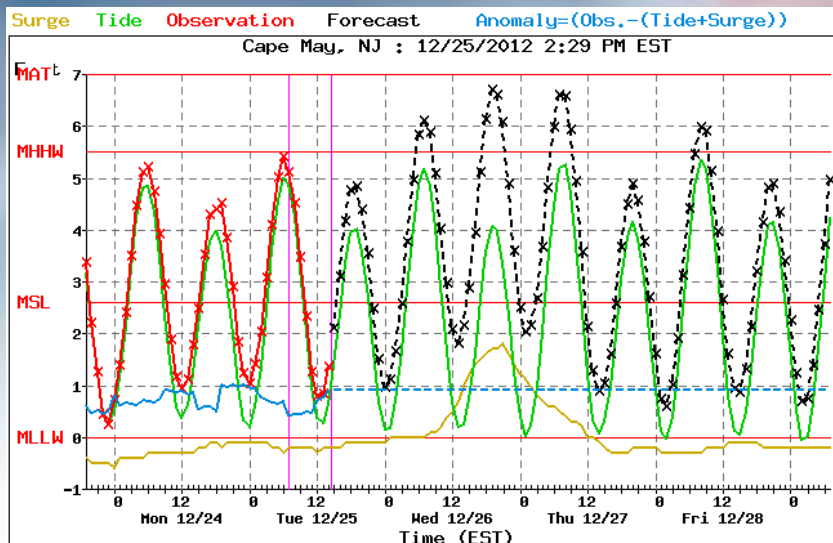
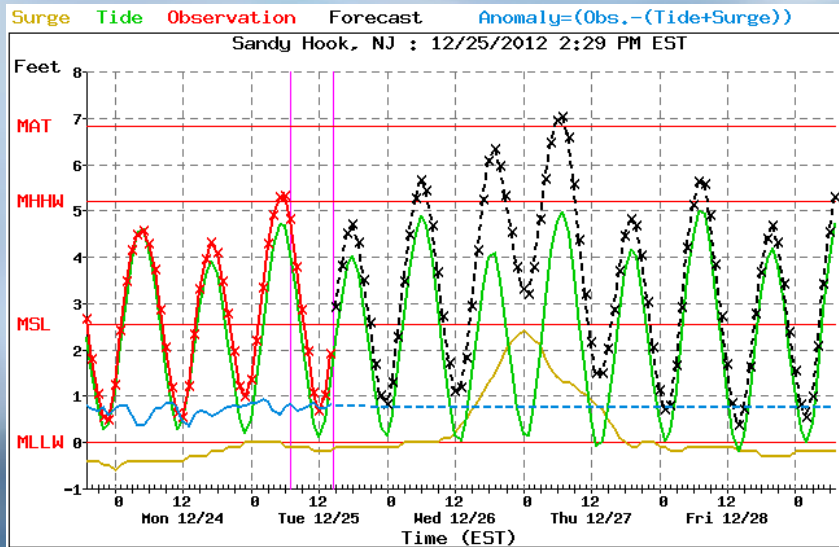
Winds

- Strong gusty winds will occur with this storm.
- Wind gusts to 55 miles an hour are possible near the Atlantic Coast and up to 45 miles an hour elsewhere.



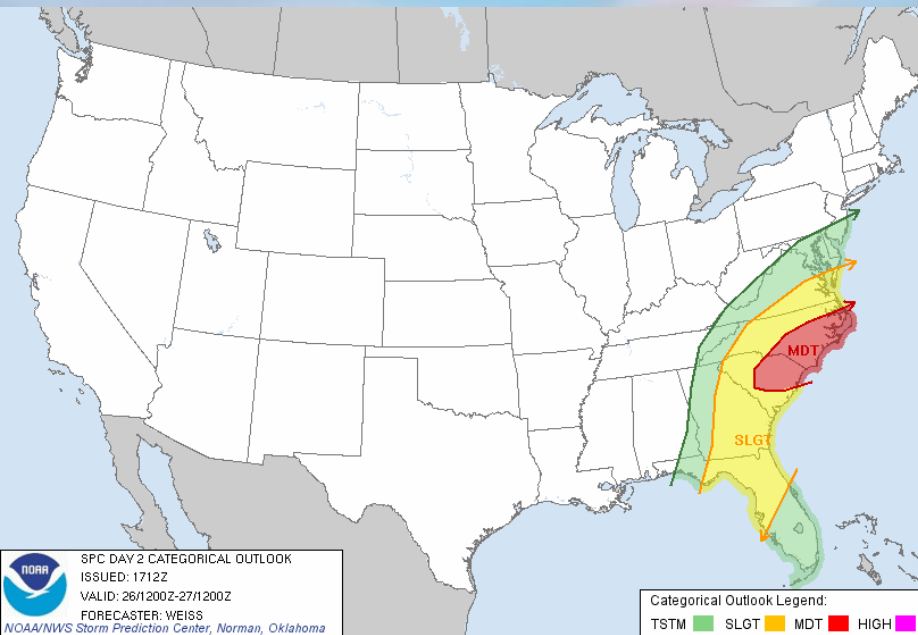
Coastal flooding

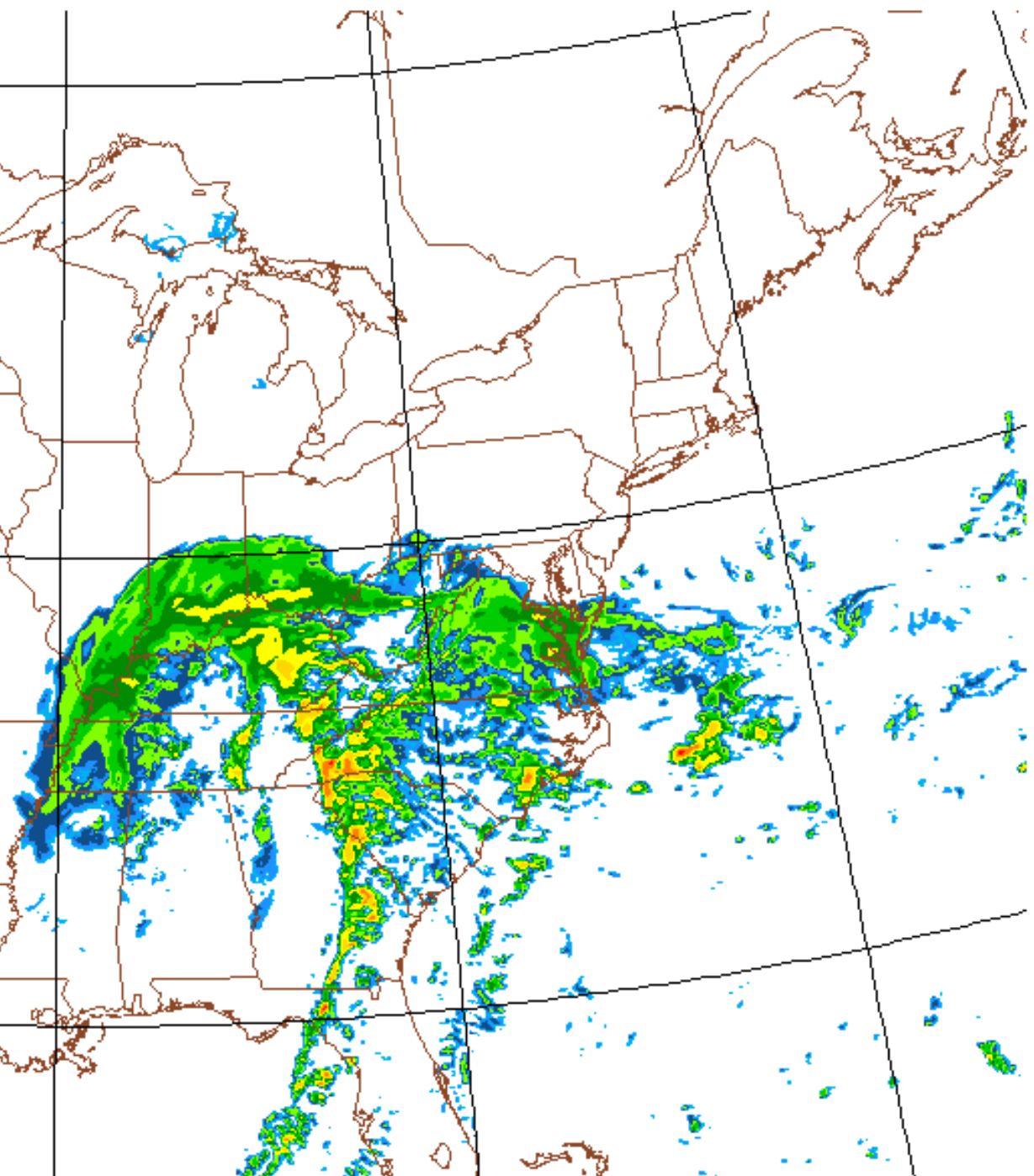
- Minor coastal flooding is likely along the Atlantic Coast, Delaware Bay & Raritan Bay. Moderate coastal flooding is possible.
- Coastal flooding is not expected along the Chesapeake Bay.



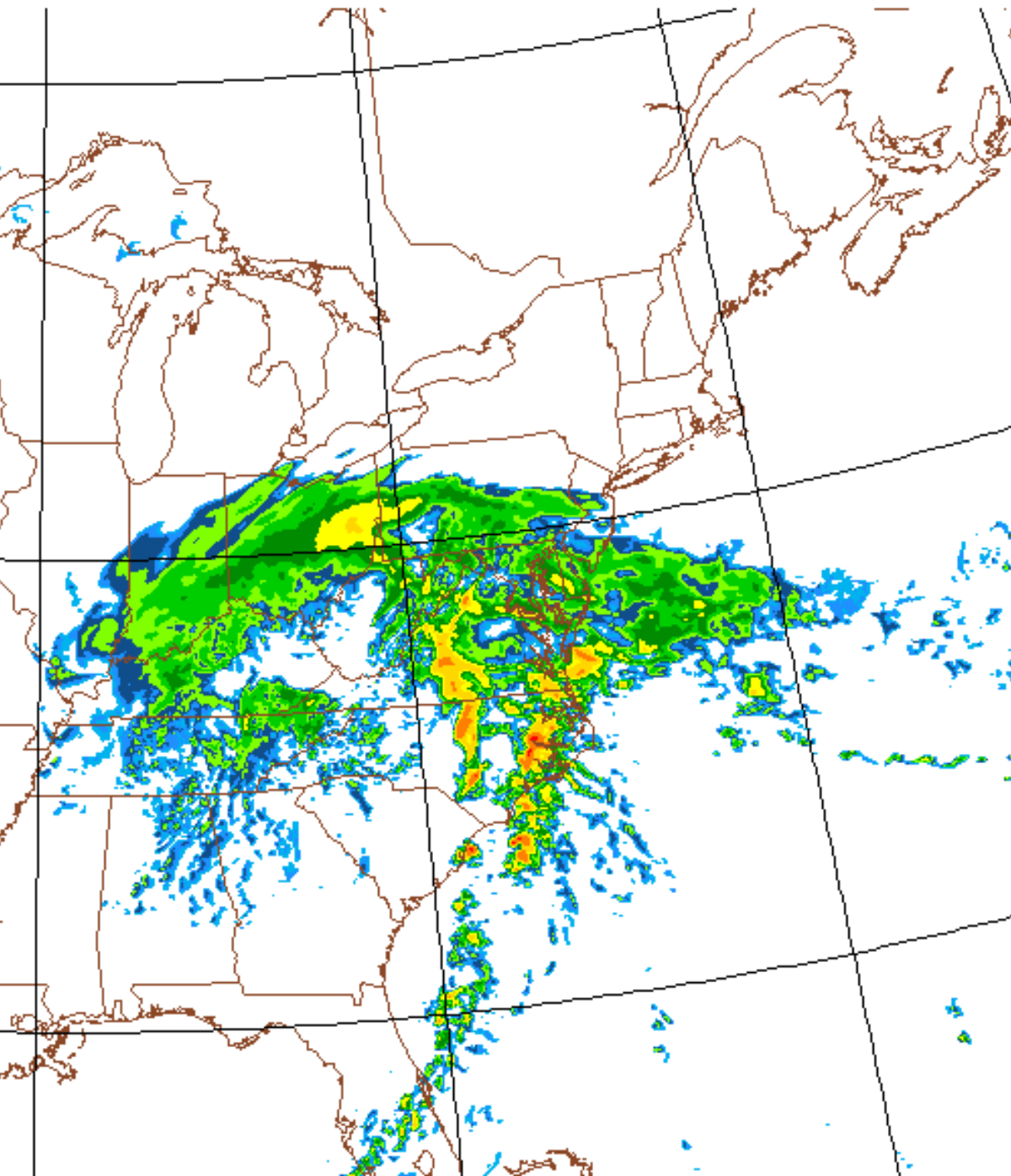
Strong/Severe Thunderstorm

- Although the calendar says 'winter', we also have a threat of strong to possibly severe thunderstorms over southern New Jersey, northeast Maryland, and all of Delaware.
- The main thunderstorm threat is strong damaging wind gusts Wednesday afternoon into Wednesday night.

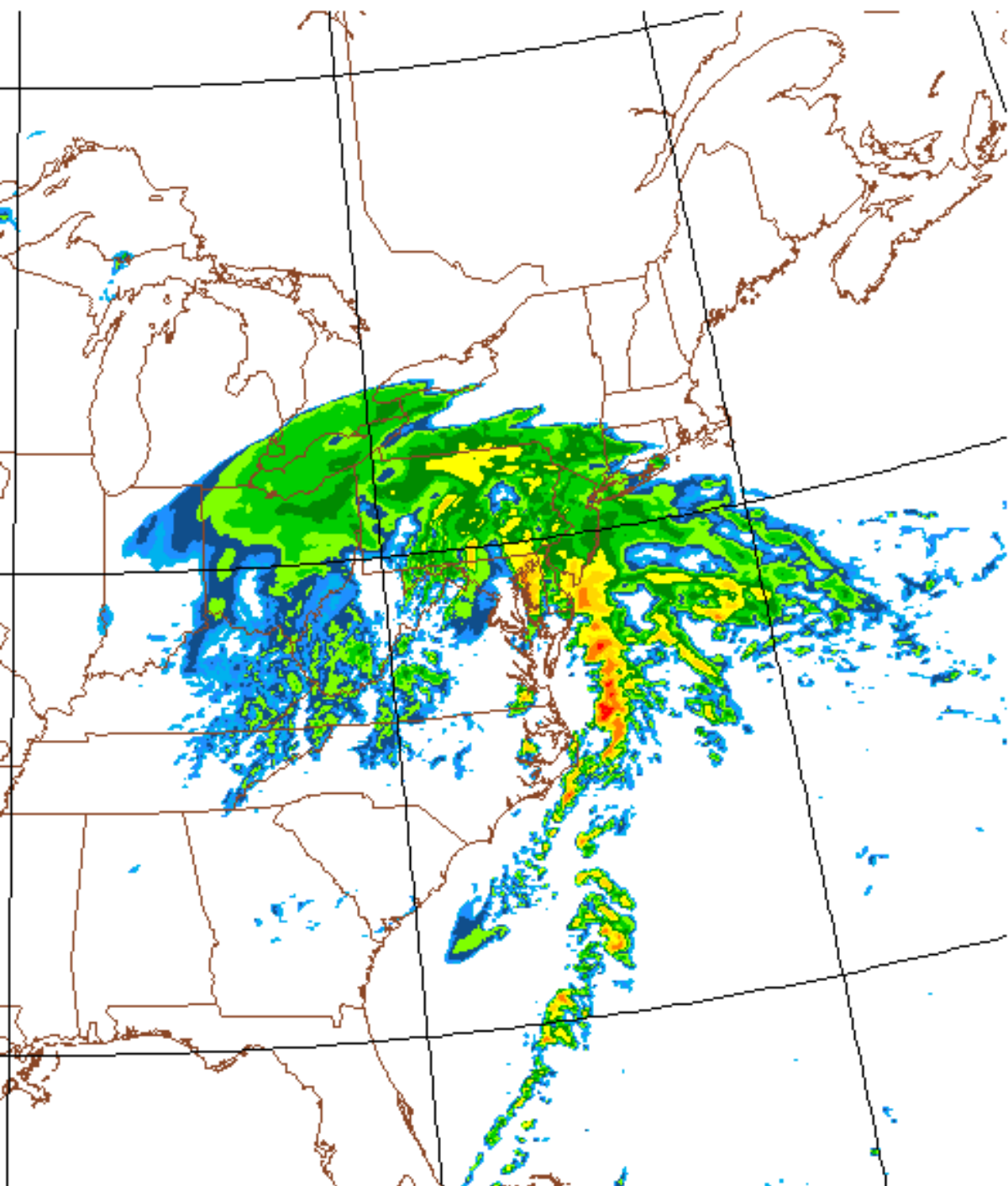




- Precipitation timing
- 1000 AM Wed



- Precipitation timing
- 400 PM Wed



- Precipitation timing
- 1000 PM Wed

Questions?

- For the latest information, visit our website at <http://www.erh.noaa.gov/phi/>
- Our latest briefing package is available from our website at:
http://www.erh.noaa.gov/phi/briefing/packages/current_briefing.pdf
- If you wish to be notified when a briefing package is issued, you can follow us on social media where we post the notice.
- You can 'friend' us on Facebook at: US National Weather Service Philadelphia/Mount Holly
- You can follow us on Twitter at: @NWS_MountHolly
- If you have any questions, please contact us.
- Gary.Szatkowski@noaa.gov
 - Office 609-261-6602 x222
- Joseph.Miketta@noaa.gov
 - Office 609-261-6602 x223

