

Major severe weather event and flooding event June 13th-14th , 2013

Prepared 1245 PM EDT – Wednesday June 12, 2013

Gary Szatkowski

NOAA's National Weather Service

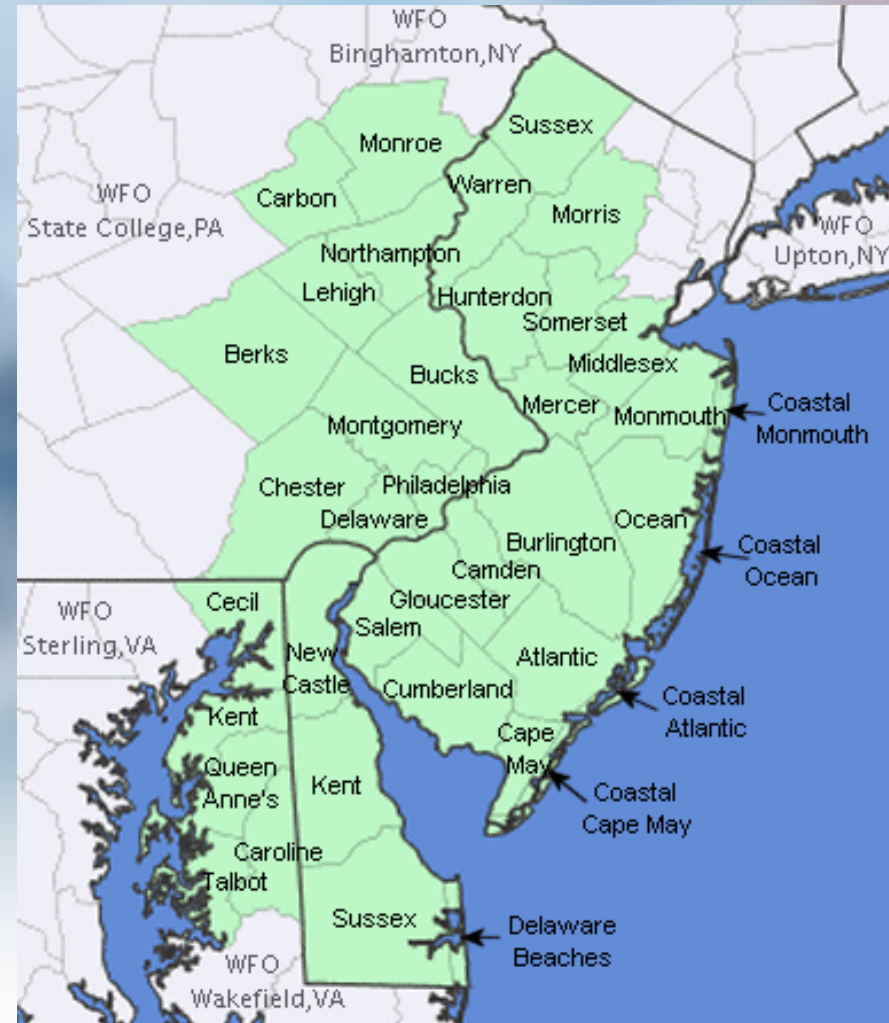
Philadelphia/Mt. Holly NJ Forecast office

<http://www.erh.noaa.gov/phi/>



Purpose of Briefing

- Briefing #1 for event
- Promote situational awareness for emergency management community & partners
- Provide guidance for planning efforts
- Briefing applies to Mount Holly service area – shaded in green on map



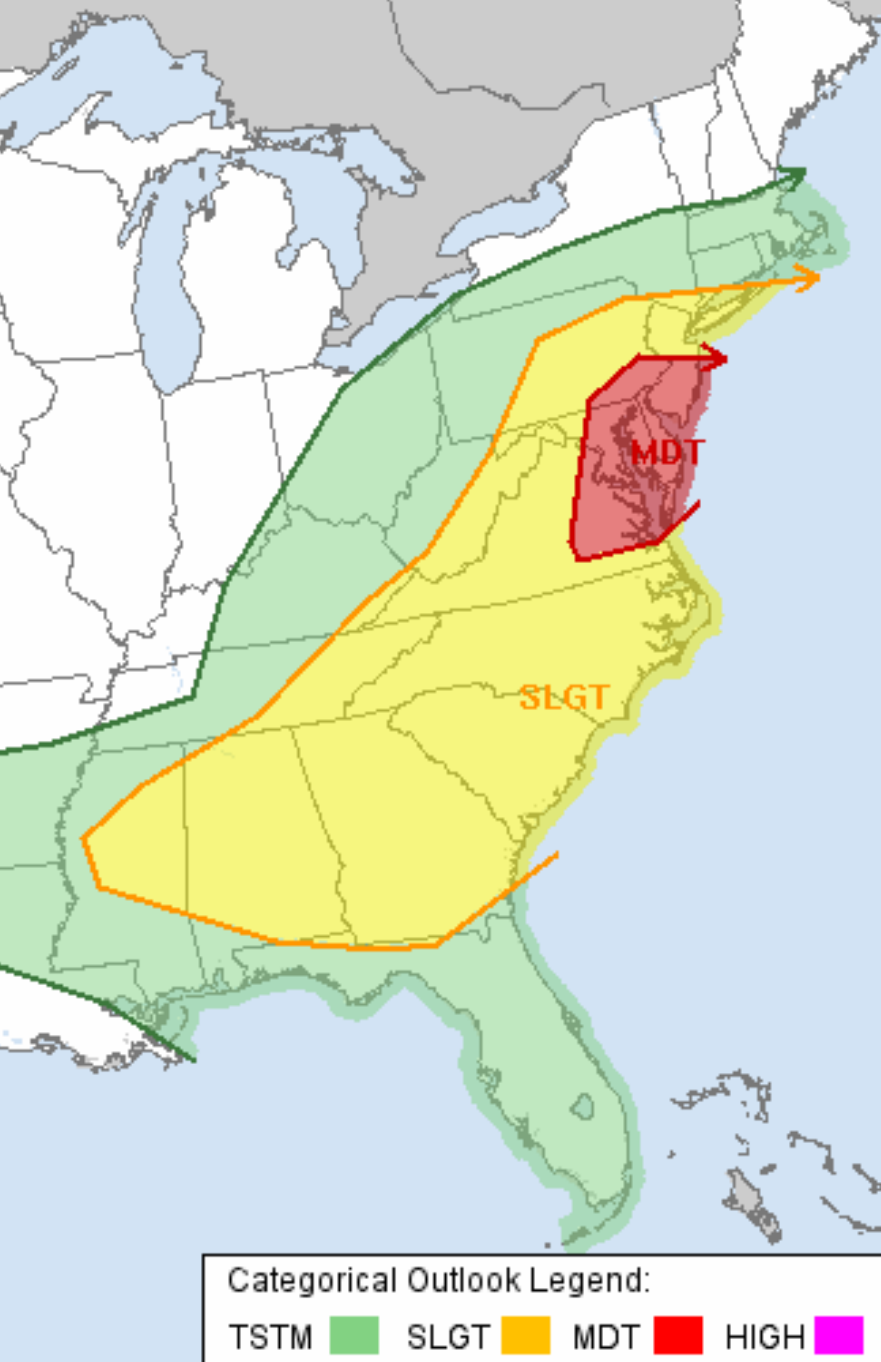
Executive Summary

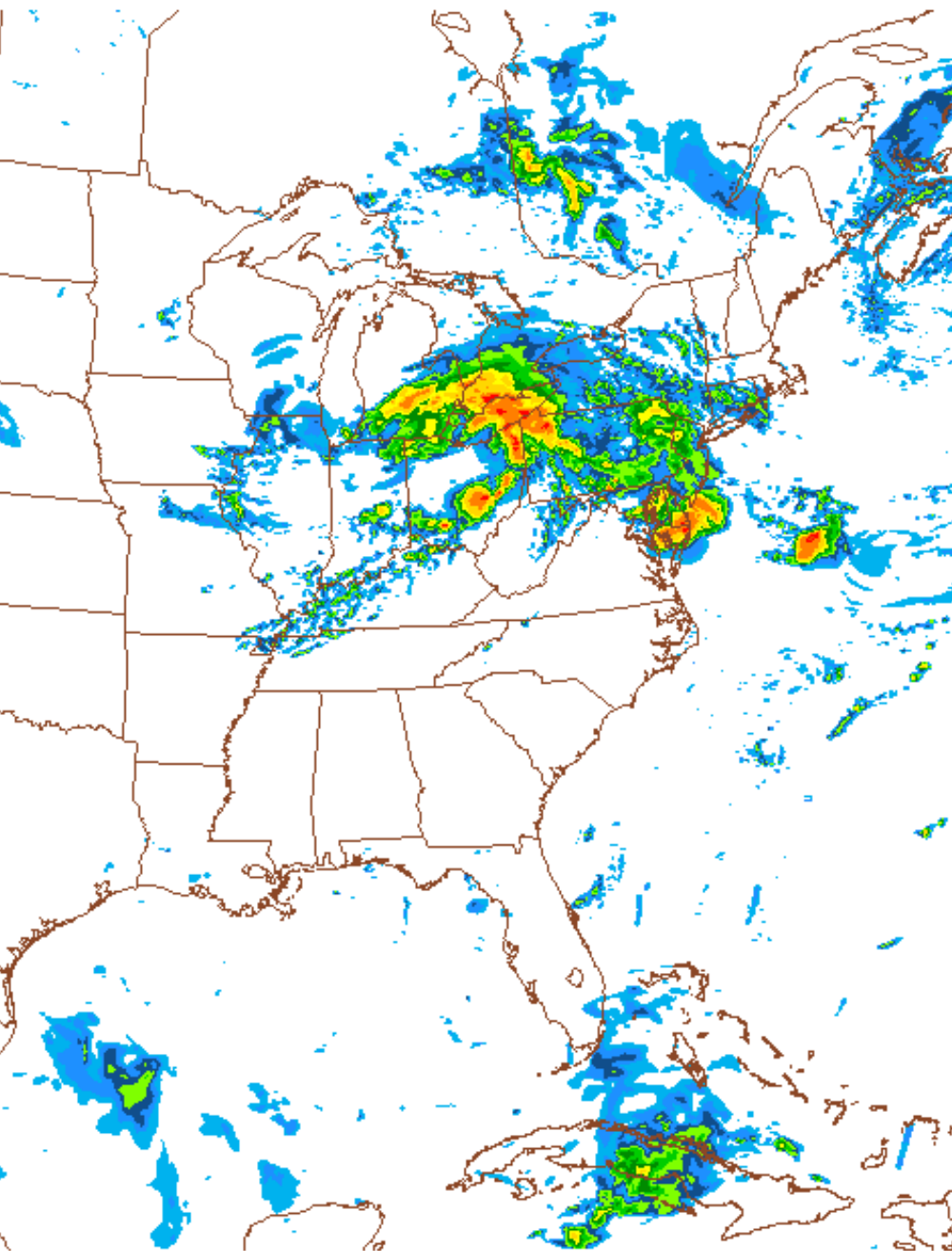
- A strong storm system will bring the potential for more very heavy rainfall and active severe weather to our region on Thursday, June 13th.
- Given our recent heavy rainfall, any additional significant rainfall brings the threat of **widespread flash flooding and river flooding**. Rainfall amounts of one to four inches are expected, with the higher amounts expected over northern portions of our forecast area.
- Based on current rainfall forecasts, minor river flooding is likely for multiple river basins across the region. **Moderate river flooding is possible**.
- There is a threat of a significant severe weather event for our region, with the main focus over the DelMarva, southern NJ, and southeast PA.
- **Tornadoes, strong damaging winds, and large hail** are all threats to our region on Thursday.
- Monitor our website for updated information.
 - <http://www.erh.noaa.gov/phi/>
- **Another briefing package will be issued by 600 PM this afternoon.**



Severe weather threat

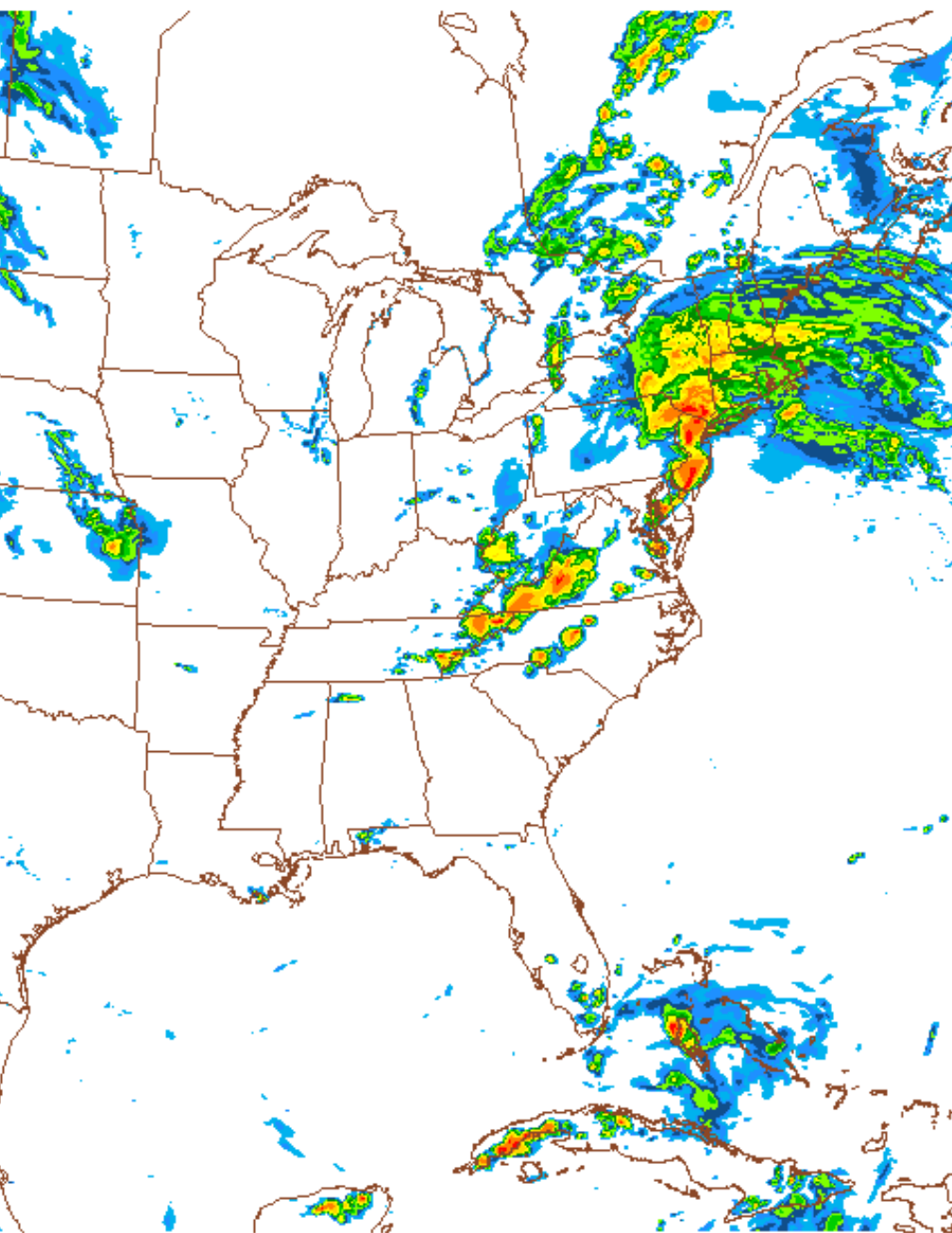
- All of our forecast area has a threat of severe weather on Thursday.
- Central & southern NJ, southeast PA, and DelMarVA have the highest threat of severe weather.
- Tornadoes, strong damaging winds and large hail are all threats to the region on Thursday.





Forecast - 5 AM Thursday

- Here is a computer model forecast of how the radar will look at 500 AM Thursday.

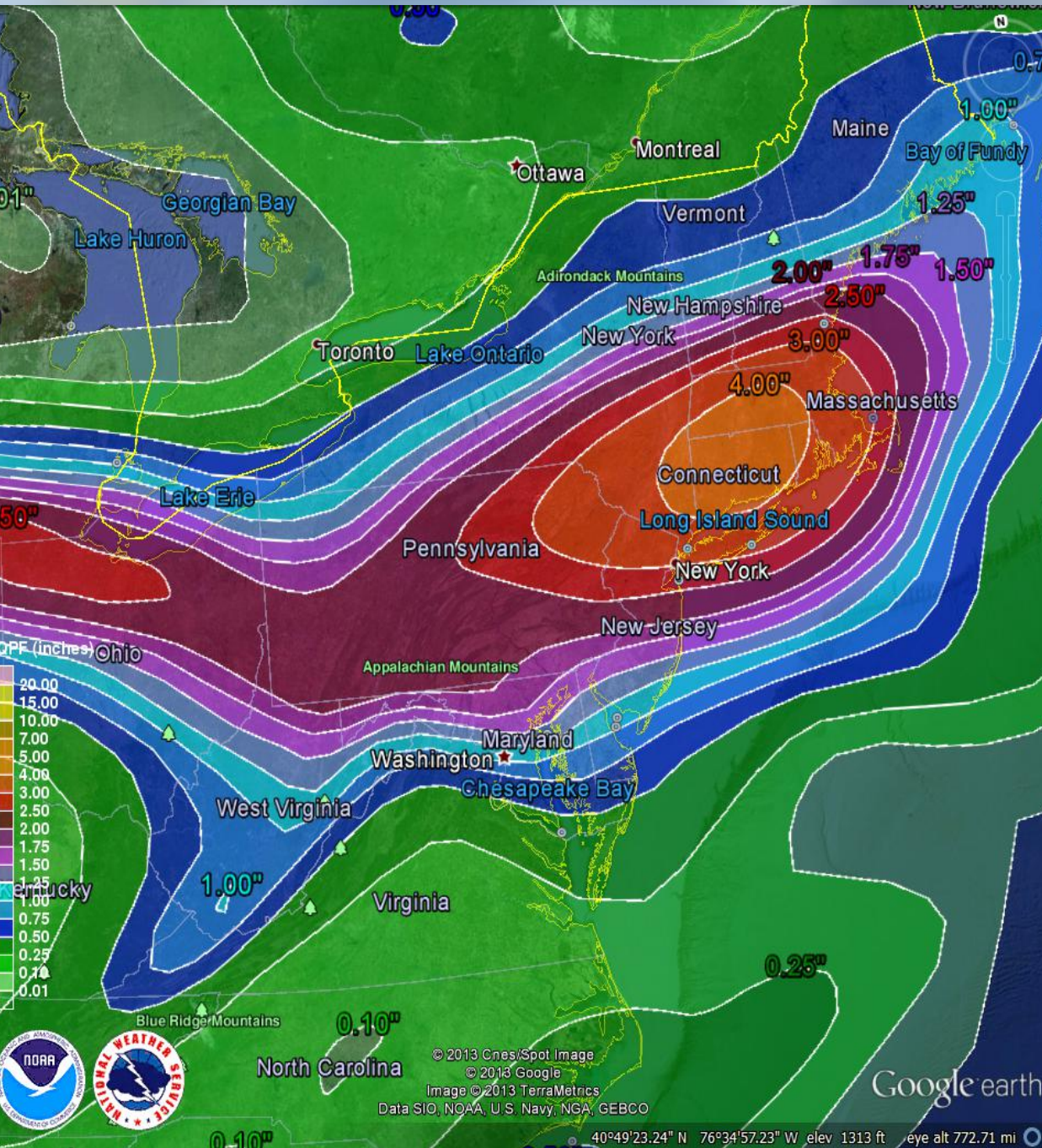


Forecast - 5 PM Thursday

- Here is a computer model forecast of how the radar will look at 500 PM Thursday.

Rainfall

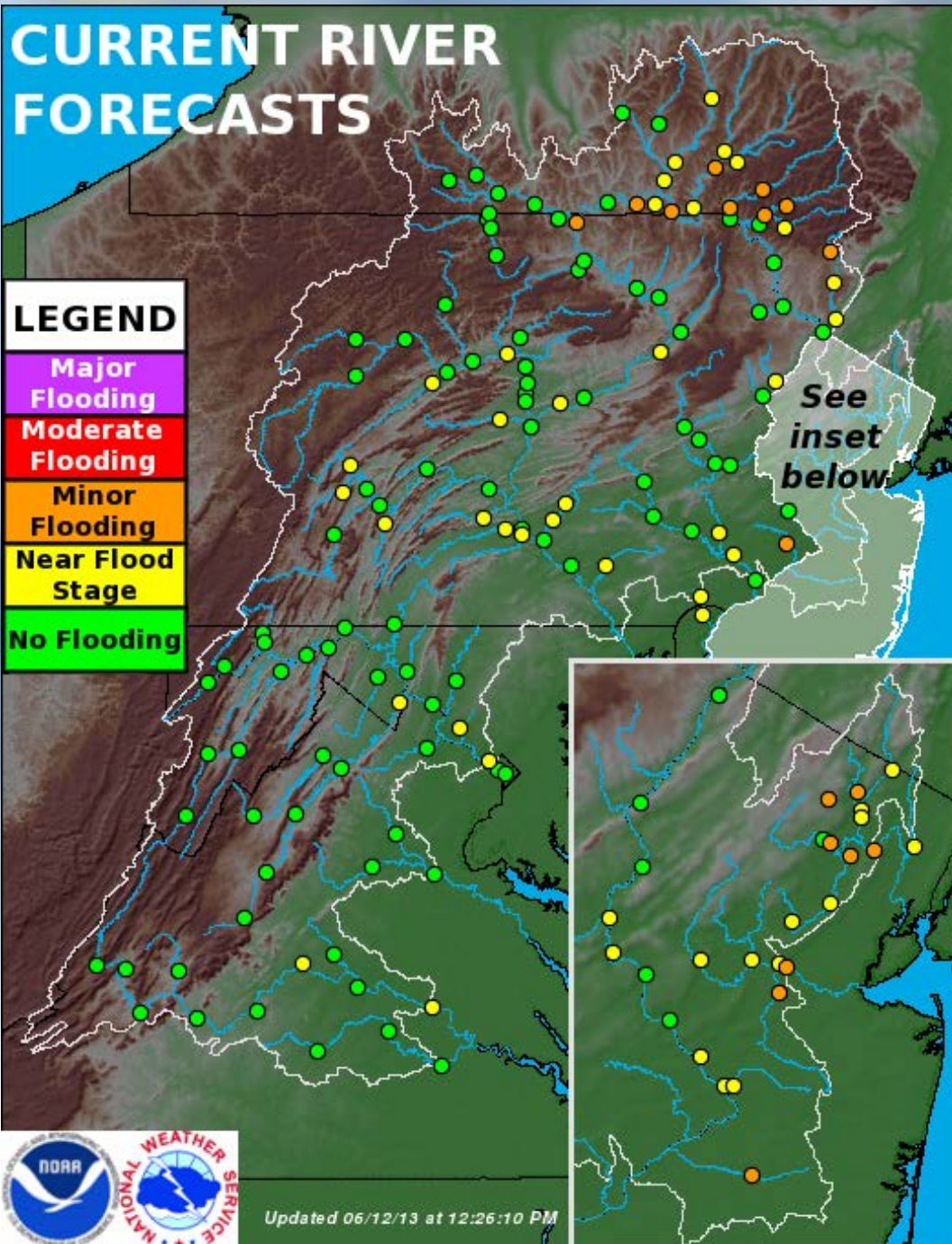
- One to four inches across the region with highest amounts in northern NJ & northeast PA.



Flash flooding

- The heaviest rain is expected to fall from late Thursday morning, through Thursday afternoon, into Thursday evening.
- Expect significant flash flooding where the heavier rainfall occurs.
- The Thursday evening rush hour will be significantly impacted.





River flooding

- Minor river flooding is likely.
- Moderate river flooding is possible.
- If more rainfall occurs than forecast, or the expected rain falls in a shorter period of time, river flooding conditions will worsen.

River flooding resources

- You can monitor the latest river observations and forecasts at:
 - <http://water.weather.gov/ahps2/forecasts.php?wfo=phi>
 - <http://www.erh.noaa.gov/marfc/>
- Today is the last day of good weather to conduct any preparedness activities.



Questions?

- For the latest information, visit our website at
 - <http://www.erh.noaa.gov/phi>
- Our latest briefing package is available from our website at:
 - http://www.erh.noaa.gov/phi/briefing/packages/current_briefing.pdf
- If you wish to be notified when a briefing package is issued, you can follow us on social media where we post the notice.
- You can ‘friend us on Facebook at: US National Weather Service Philadelphia/Mount Holly
- You can follow us on Twitter at: @NWS_MountHolly

- If you have any questions, please contact us.
- Gary.Szatkowski@noaa.gov
 - Office 609-261-6602 x222
- Joseph.Miketta@noaa.gov
 - Office 609-261-6602 x223

