



Weather briefing Strong Coastal Nor'easter November 7th-8th, 2012

Prepared 1245 PM EDT – Tuesday November 6, 2012

Gary Szatkowski

NOAA's National Weather Service

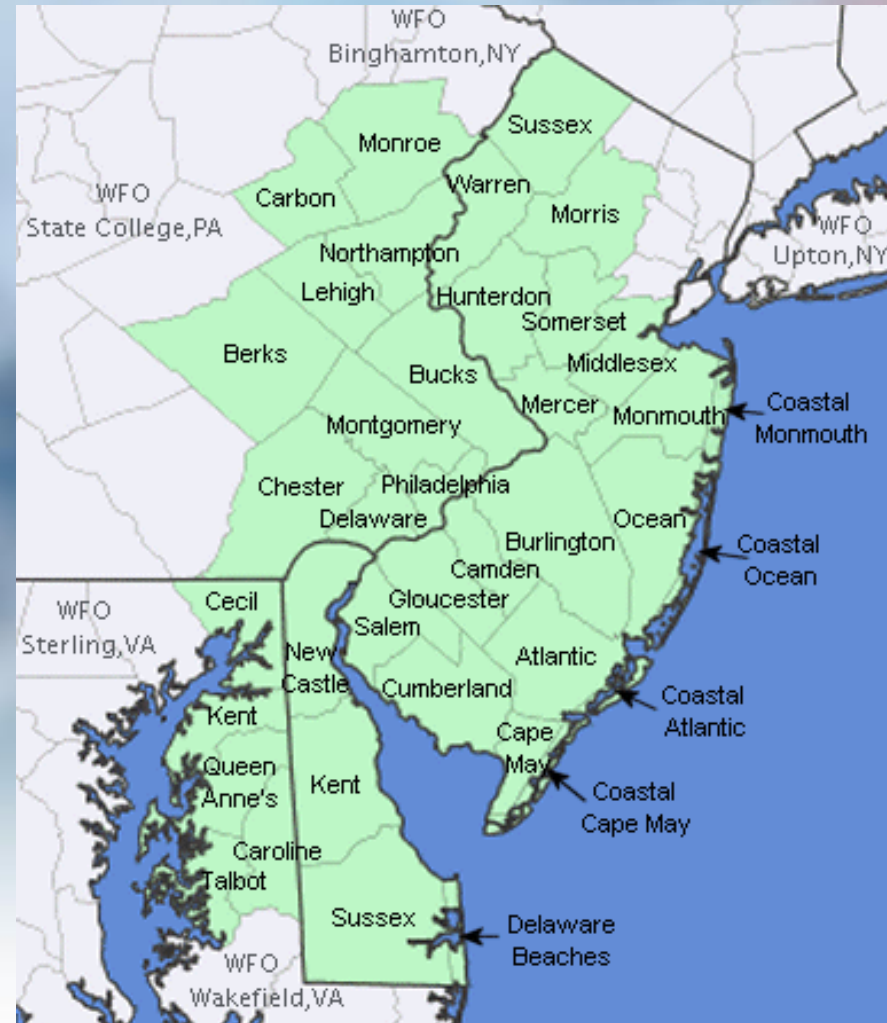
Philadelphia/Mt. Holly NJ Forecast Office

Weather.gov/phi



Purpose of Briefing

- Briefing #5 for event
- Promote situational awareness for emergency management community & partners
- Provide guidance for planning efforts
- Briefing applies to Mount Holly service area – shaded in green on map



Changes from previous briefing

- Forecast confidence is lower than average for this event.
- Forecast guidance overnight suggested storm would be somewhat weaker & further out to sea
- But new guidance this morning has reversed that trend and expected intensity & track of storm is now similar to what it was 24 hours ago.
- Just as we asked you to err on the side of caution with this storm, we will err on the side of keeping this briefing package focused on the reasonable worst case scenario.
- Plan for the worst, hope for the best.
- Watches for this event have been issued, and will likely be upgraded to warnings/advisories later today into tonight.
- Monitor the latest information at weather.gov/phi

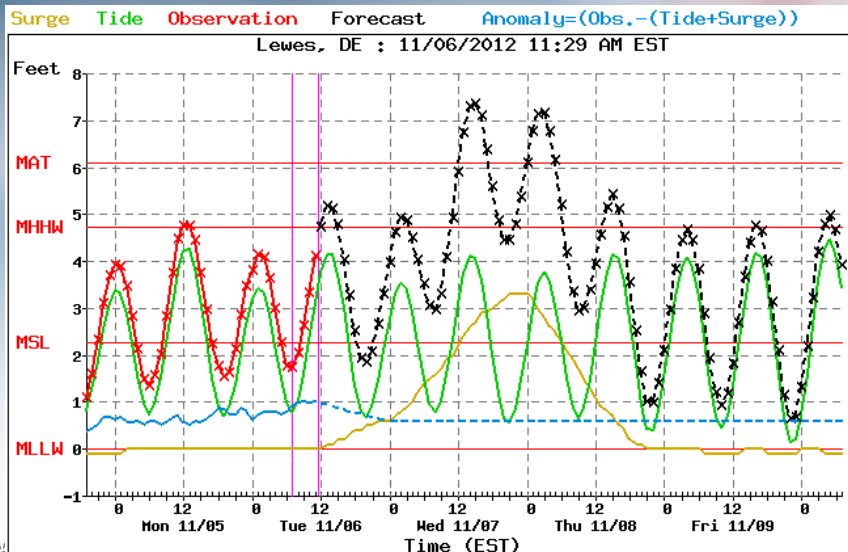
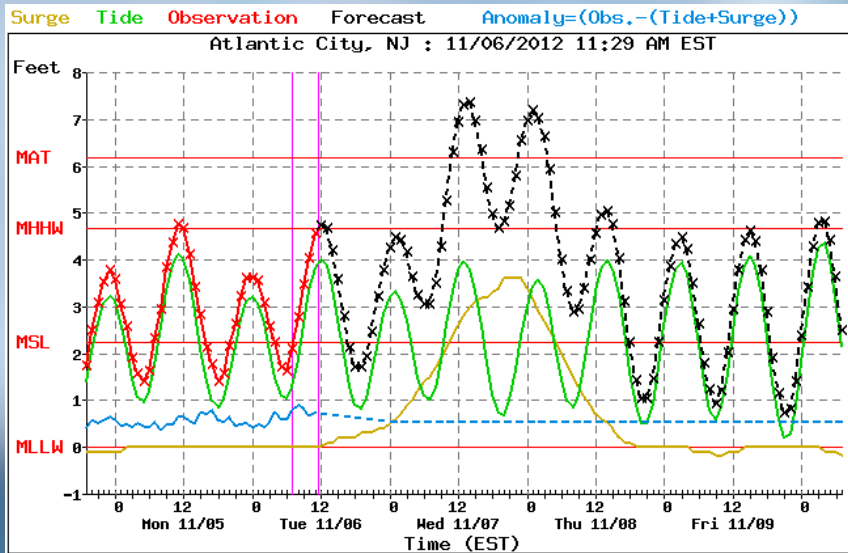


Executive Summary

- A strong coastal nor'easter will threaten the region in the November 7th-8th timeframe.
 - Storm force wind gusts (55-65 mph) are likely during this storm.
 - Moderate coastal flooding is likely during this storm, major coastal flooding is still a slight possibility; the high tides of most concern are the ones around midday Wednesday, November 7th and the following high tide Wednesday night.
 - There will be moderate to severe beach erosion during this event.
 - This nor'easter will have greater impact than usual because of the serious impacts from Coastal Storm Sandy.
 - There is a threat of wintry precipitation over the region.
-
- Next briefing package will be issued by **Noon on Wednesday, November 7th.**
 - Monitor our latest weather forecast at **<http://www.erh.noaa.gov/phi/>**
 - Watches have been issued, warnings & advisories likely will be in the near future.
- To keep up on the storm, monitor our website. This briefing package is simply a snapshot in time.



Coastal flooding threat



- Moderate coastal flooding is likely, and major coastal flooding is still a slight possibility with this storm along the Atlantic coast of New Jersey & Delaware.
- Minor coastal flooding is likely on the Delaware Bay & Chesapeake Bay.
- High tides Wednesday & Wednesday night are the ones to watch.
- Waves in surf zone along the Atlantic Coast will be 7 to 10 feet. Moderate beach erosion is likely; **major beach erosion is possible.**

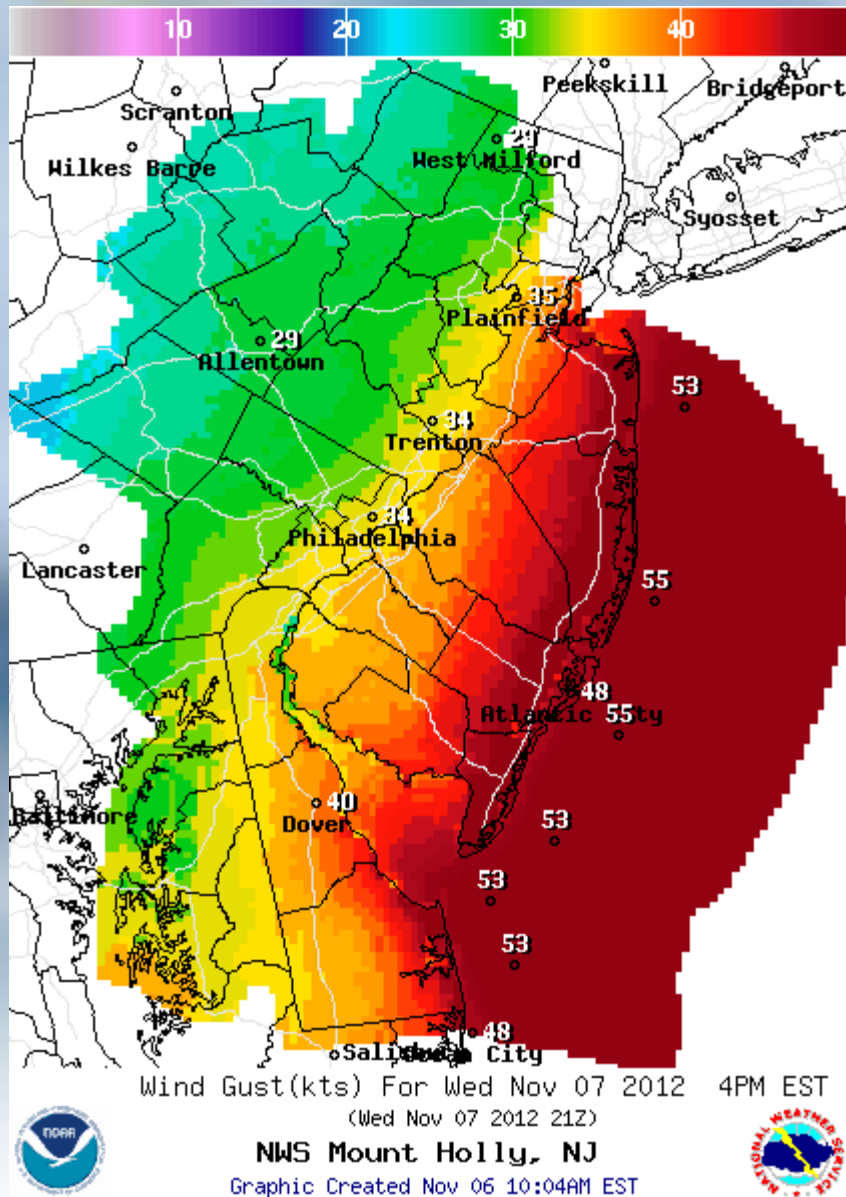
Things to keep in mind

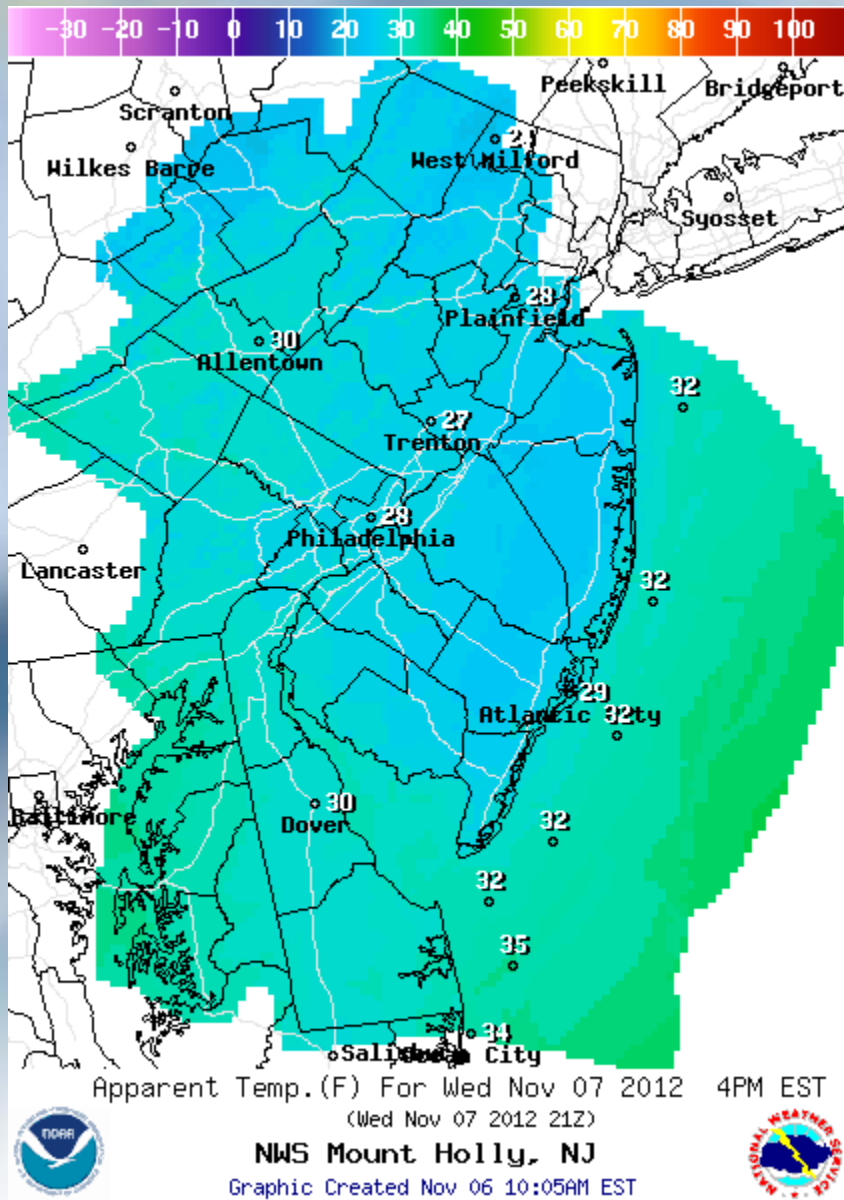
- Impact from coastal flooding and strong wave action will be worsened due to effects of Coastal Storm Sandy.
- Dunes have been weakened or washed away; bulkheads damaged or destroyed.
- Coastal storm defenses have been seriously compromised.
- Err on side of caution when dealing with this upcoming nor'easter.



Winds

- Wind gusts 55 to 65 mph are likely with this storm. Strongest winds closest to the Atlantic Coast.
- Structures and trees weakened by Coastal Storm Sandy may be further damaged by winds of this magnitude.

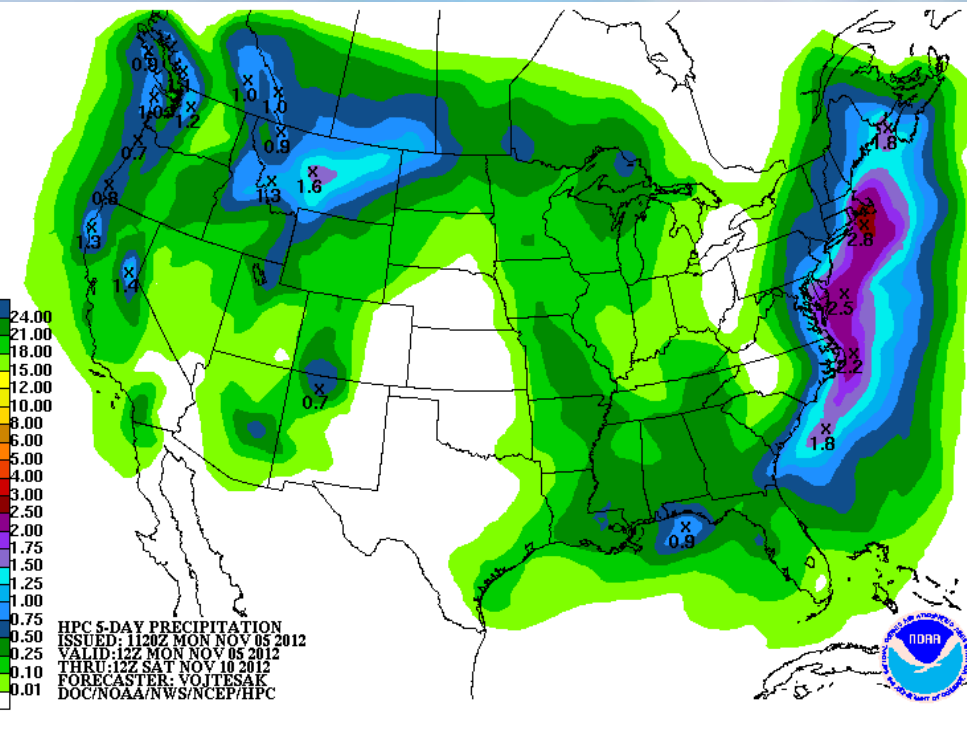




Temperatures

- Wind chill values will be in the 20s and 30s for much of the region during the height of the storm.
- These will be dangerous conditions for those working outdoors or still experiencing power outages due to Coastal Storm Sandy.

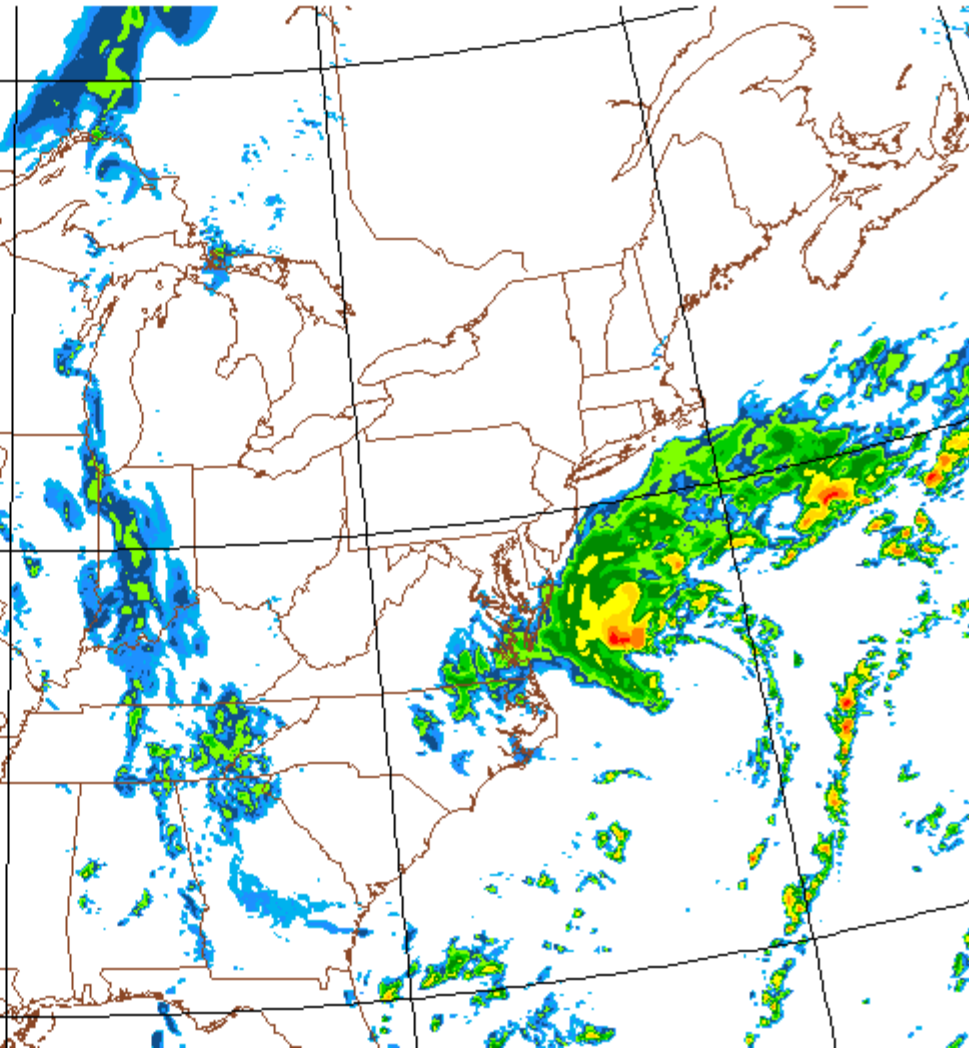
Precipitation



- Precipitation expected on Wednesday, November 7th into Thursday, November 8th.
- Mainly rain, but likely mixing with or changing to snow over much of the region.
- Rainfall amounts of one to two inches expected, highest amounts closest to the Atlantic Coast.

Precipitation – 700 AM Wednesday

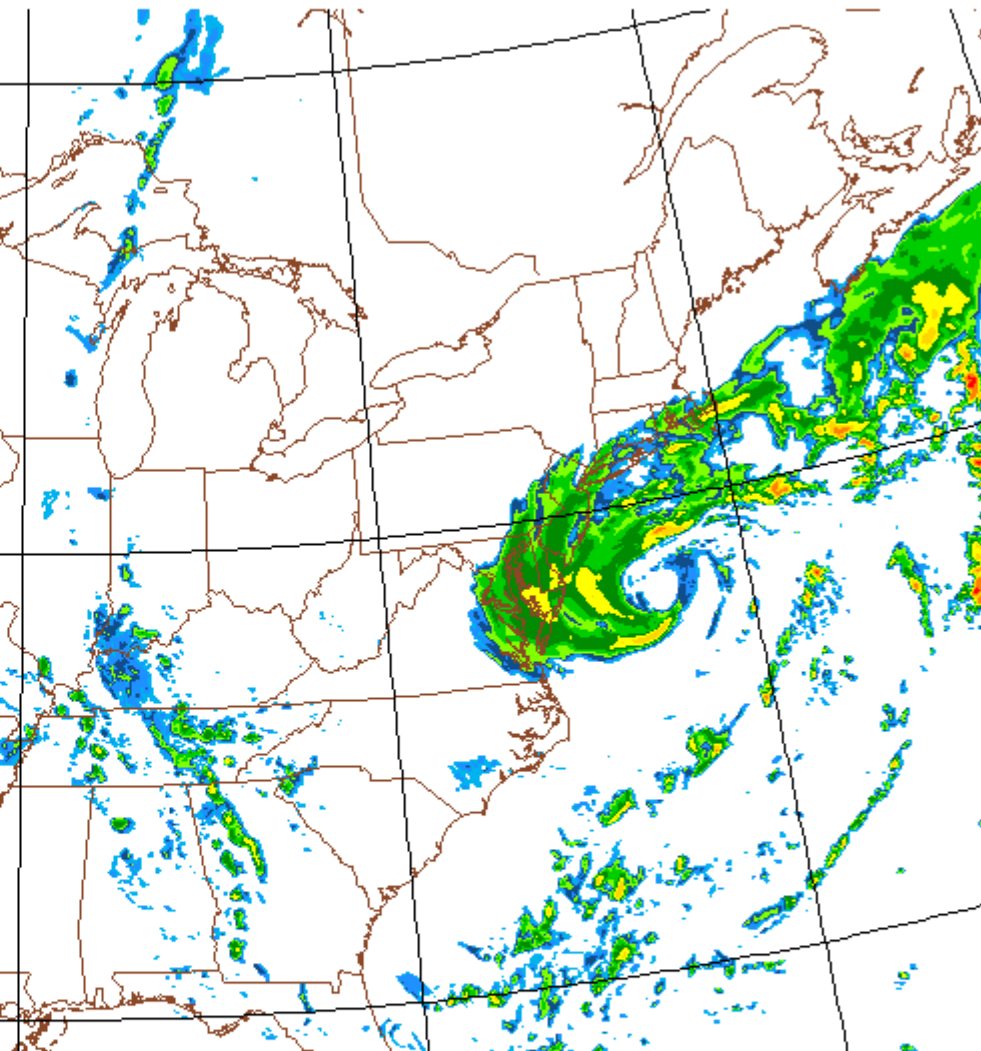
11/07/12 12UTC NCEP/NWS/NOAA



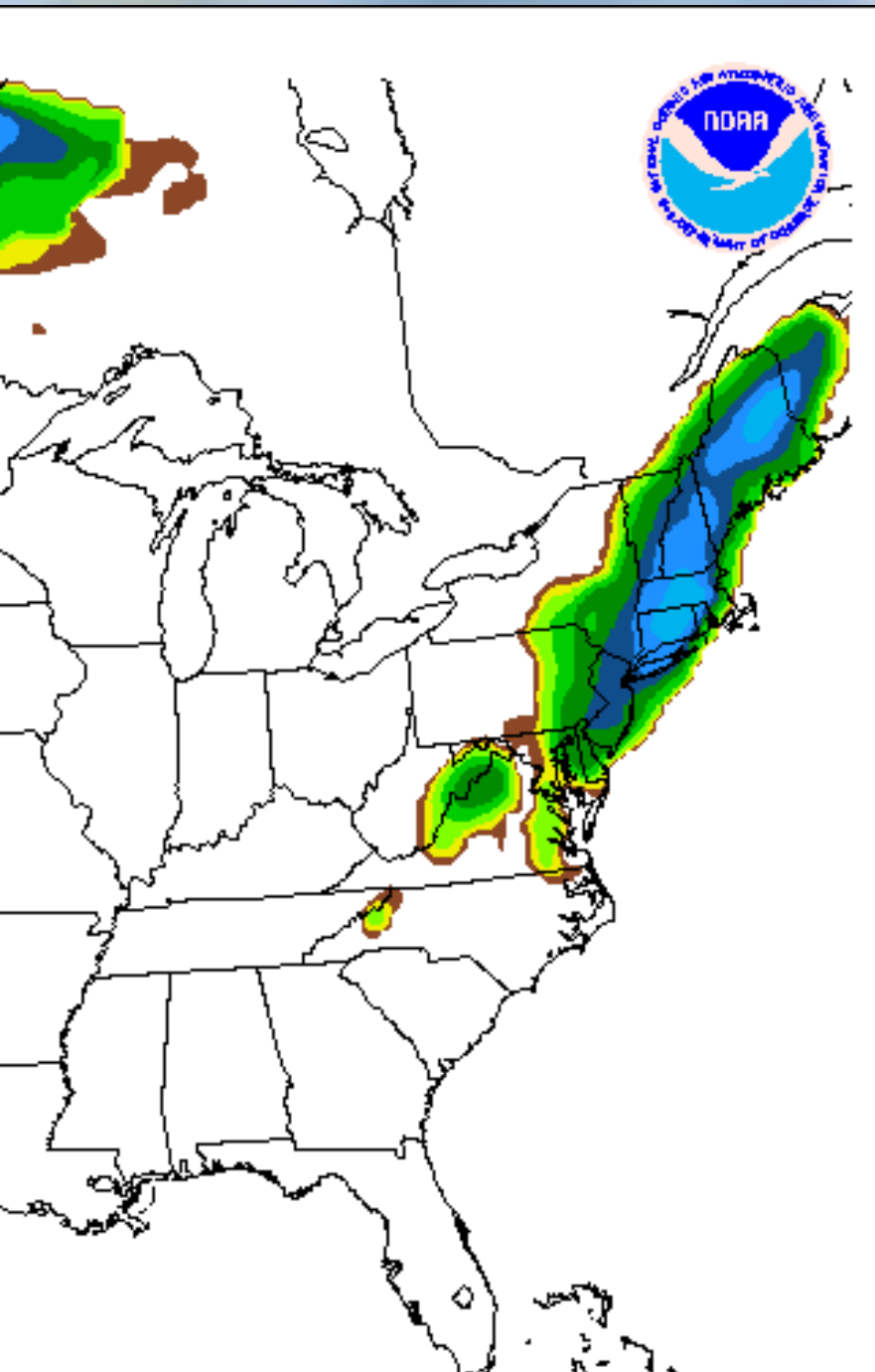
- Graphic on left is forecast radar imagery for 700 AM Wednesday, November 7th.
- Precipitation will be approaching the NJ & DE coast and will be spreading north & west through the day.

Precipitation – 400 PM Wednesday

/07/12 21UTC NCEP/NWS/NOAA



- Precipitation continues to spread north and west.



Snowfall

- Map on left shows threat area for snowfall.
- Much of the region is now at risk to see snowfall.
- Amounts likely to range from one to four inches.
- Map on left is a 'risk' map, not a snowfall total map. See latest forecast for your location for forecast snowfall amounts.

Questions?

- For the latest information, visit our website at weather.gov
- If you have any questions, please contact us.
- Gary.Szatkowski@noaa.gov
 - Office 609-261-6602 x222
 - Forecast 609-261-6600
- Joseph.Miketta@noaa.gov
 - Office 609-261-6602 x223

