

Weather Briefing Threat of Heavy Rainfall and Significant Flooding due to Remnants of Tropical Storm Lee September 6th- September 8th , 2011

Prepared 730 PM EDT – Monday, September 5th, 2011

Gary Szatkowski

NOAA's National Weather Service

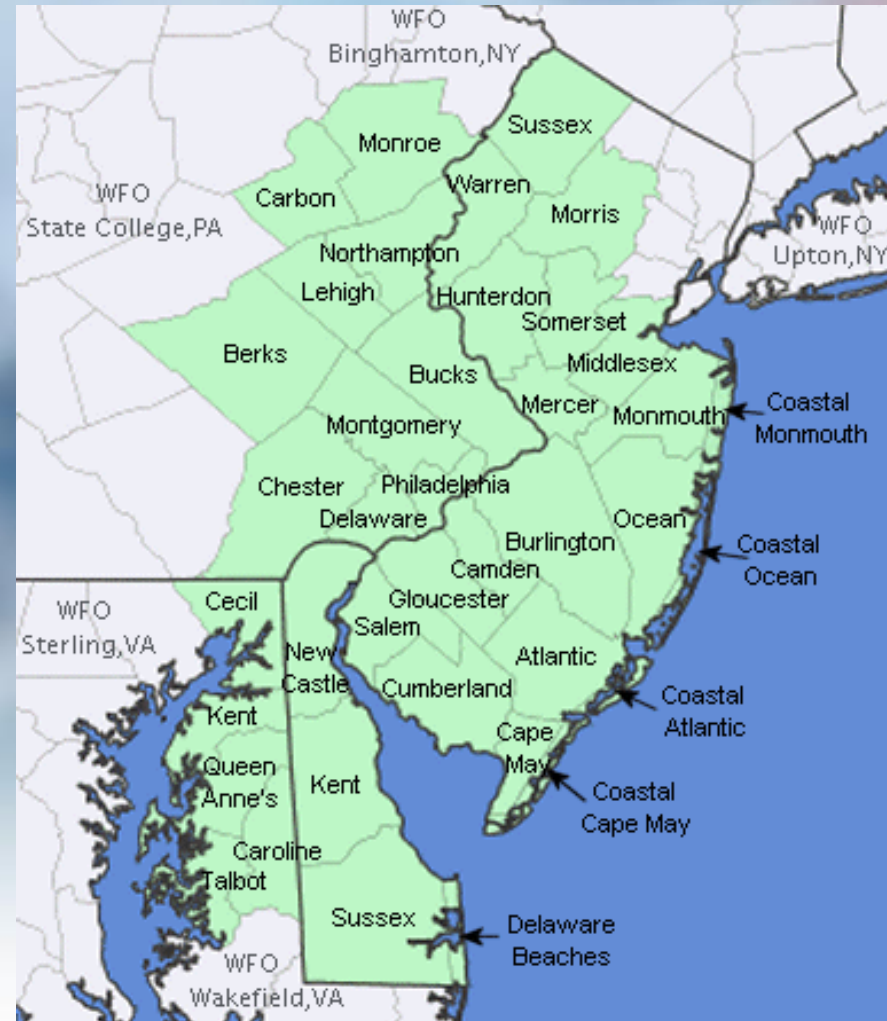
Philadelphia/Mt. Holly NJ Forecast office

Weather.gov/phi



Purpose of briefing

- Briefing #1 for event
- Promote situational awareness for emergency management community & partners
- Provide guidance for planning efforts
- Briefing applies to Mount Holly service area – shaded in green on map



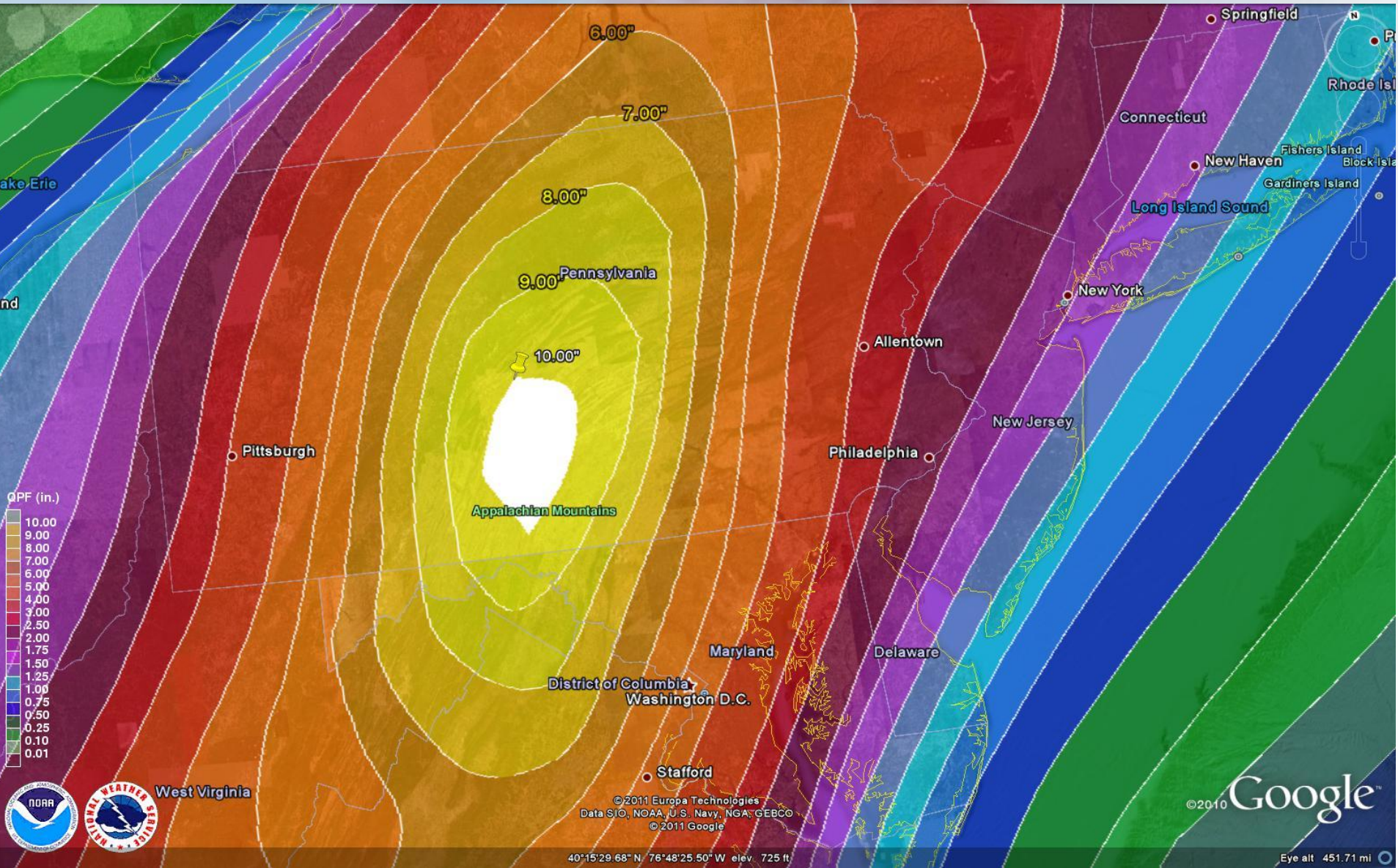
Executive Summary

- Heavy rainfall associated with remnants of Tropical Storm Lee will affect the region over the next several days.
- Flash flooding is likely; minor to moderate river flooding is likely
- Major river flooding is possible
- See the following slides for additional information.
- Next briefing package will be issued Tuesday afternoon, September 6th
- Maintain situational awareness by monitoring our website at:
<http://weather.gov/phi>
- Contact information
Gary Szatkowski – office 609-261-6602, ext. 222
cell 609-320-7205



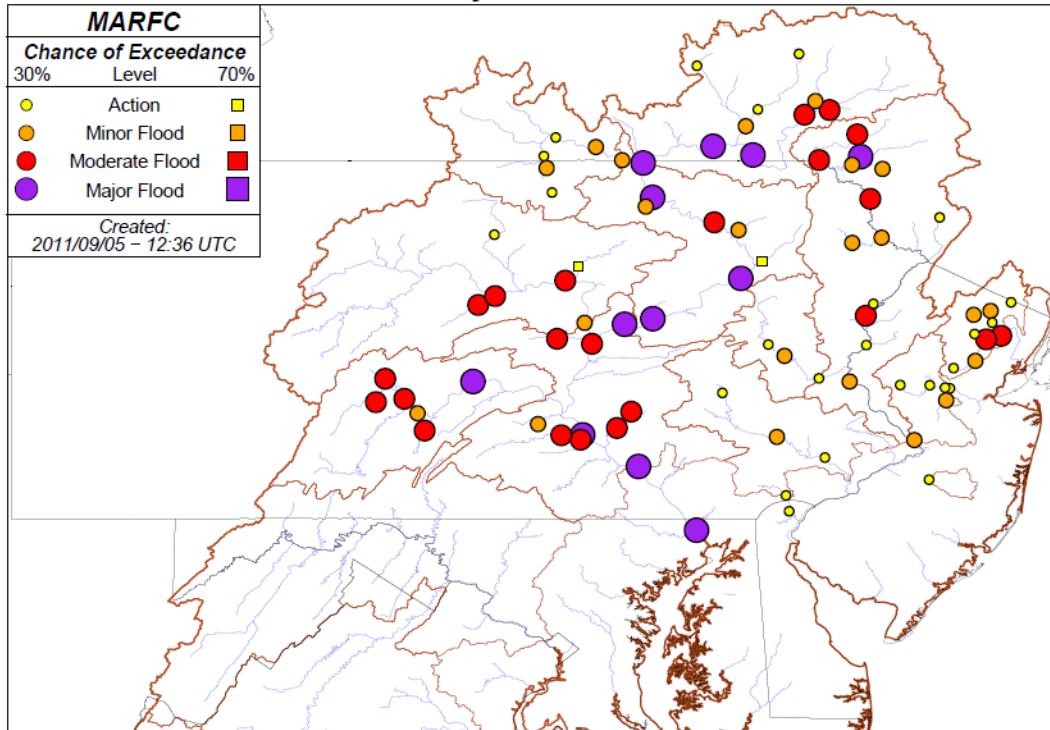
The problem – Rainfall!

The graphic shows forecast rainfall totals over the next 72 hours – that is a 10+ inch rainfall maximum over central Pennsylvania



Our forecast tools - example

GEFS Ensemble Summary for 9/4/2011 - 9/11/2011
Forecast Cycle: 2011/09/05/06



- The graphic shows one of the tools forecasters use to assess the flooding threat based on the expected rainfall
- Purple – threat of major flooding
- Red – threat of moderate flooding
- Orange – threat of minor flooding
- Right now, this tool is showing the threat of minor to moderate river flooding in NJ, DE, and eastern PA; the threat of major river flooding is highlighted to our west and north

Based on current forecast

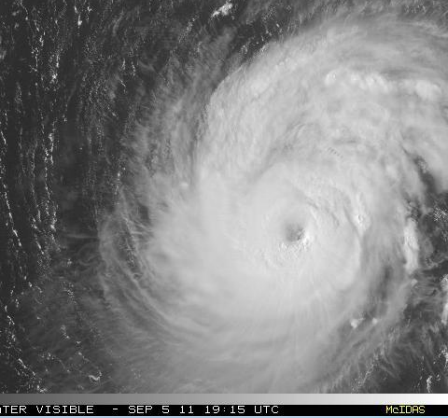
- Given our wet soil conditions, there is a significant risk of flash flooding where the heavier rains fall
- There is a significant threat of minor to moderate river flooding, with the highest risk where the heavier rainfall occurs.



Things to keep in mind

- Even a slight shift eastward of the heaviest precipitation will rapidly escalate the threat of both flash flooding and river flooding
- If the heavier rainfall moves eastward:
 - Flash flooding will become more widespread
 - The threat of major river flooding will become possible.
- Bottom line: Keep a close eye on the rainfall forecasts over the next several days

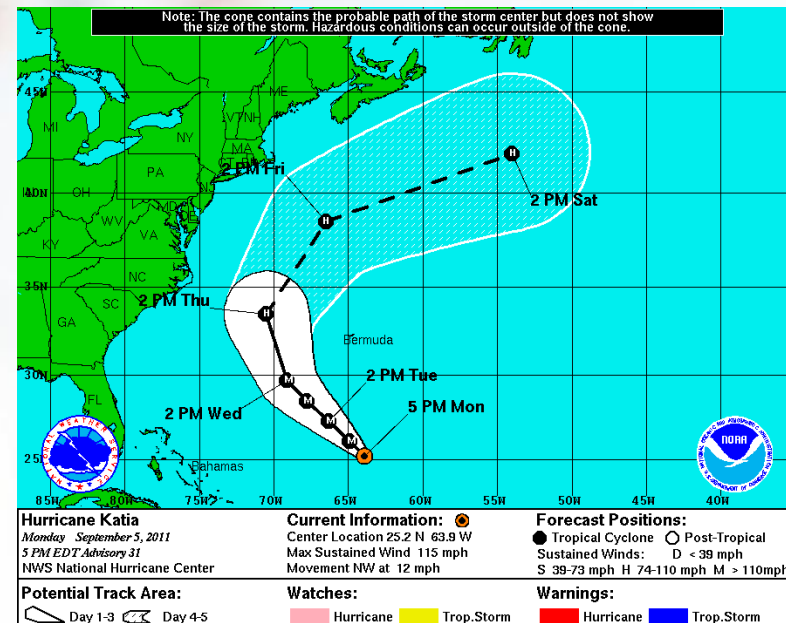




A Quick Update on Hurricane Katia

- Now a major hurricane
- Main impact on East Coast expected to be large swells and dangerous rip currents
- Maintain situational awareness of the latest National Hurricane Center forecast for the Hurricane at:

— www.nhc.noaa.gov



Questions?

- If you have any questions, please contact us.
- Gary.szatkowski@noaa.gov
- Office 609-261-6602 x222
- Cell 609-320-7205

