

Weather Briefing Threat of Heavy Rainfall and Significant Flooding due to Remnants of Tropical Storm Lee September 6th- September 8th, 2011

Prepared 245 PM EDT – Tuesday, September 6th, 2011

Gary Szatkowski

NOAA's National Weather Service

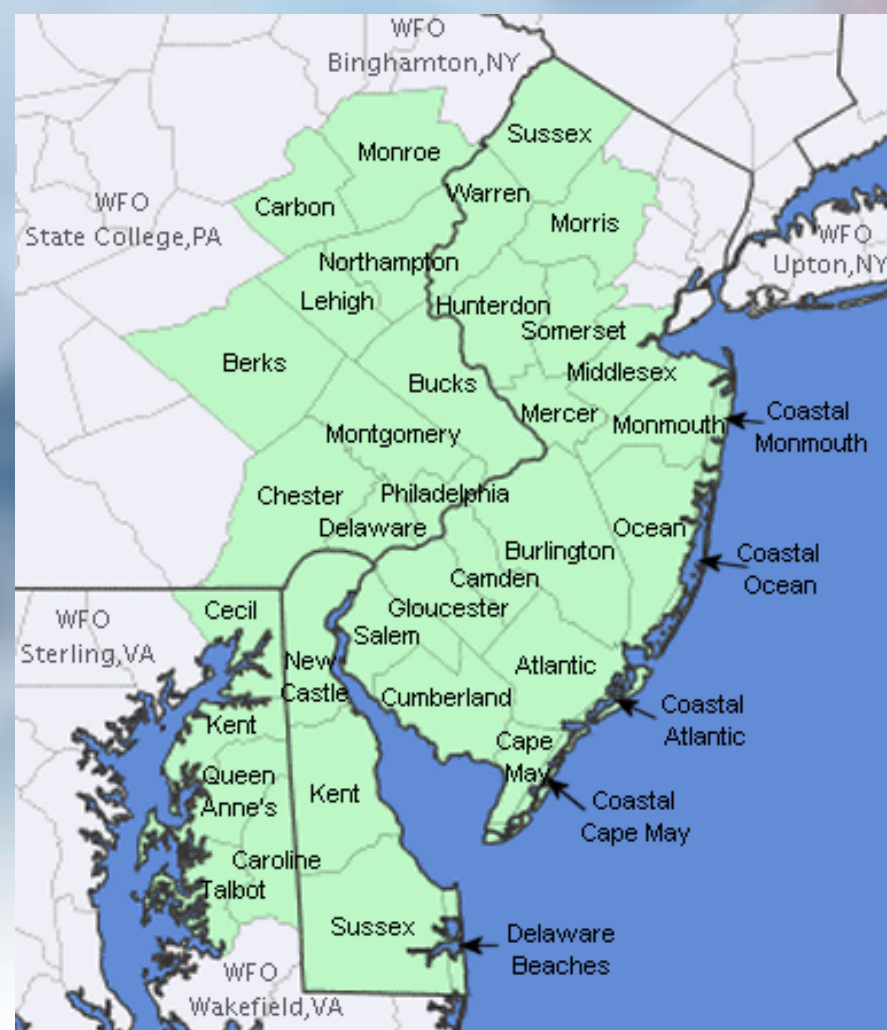
Philadelphia/Mt. Holly NJ Forecast office

Weather.gov/phi



Purpose of briefing

- Briefing #2 for event
- Promote situational awareness for emergency management community & partners
- Provide guidance for planning efforts
- Briefing applies to Mount Holly service area – shaded in green on map

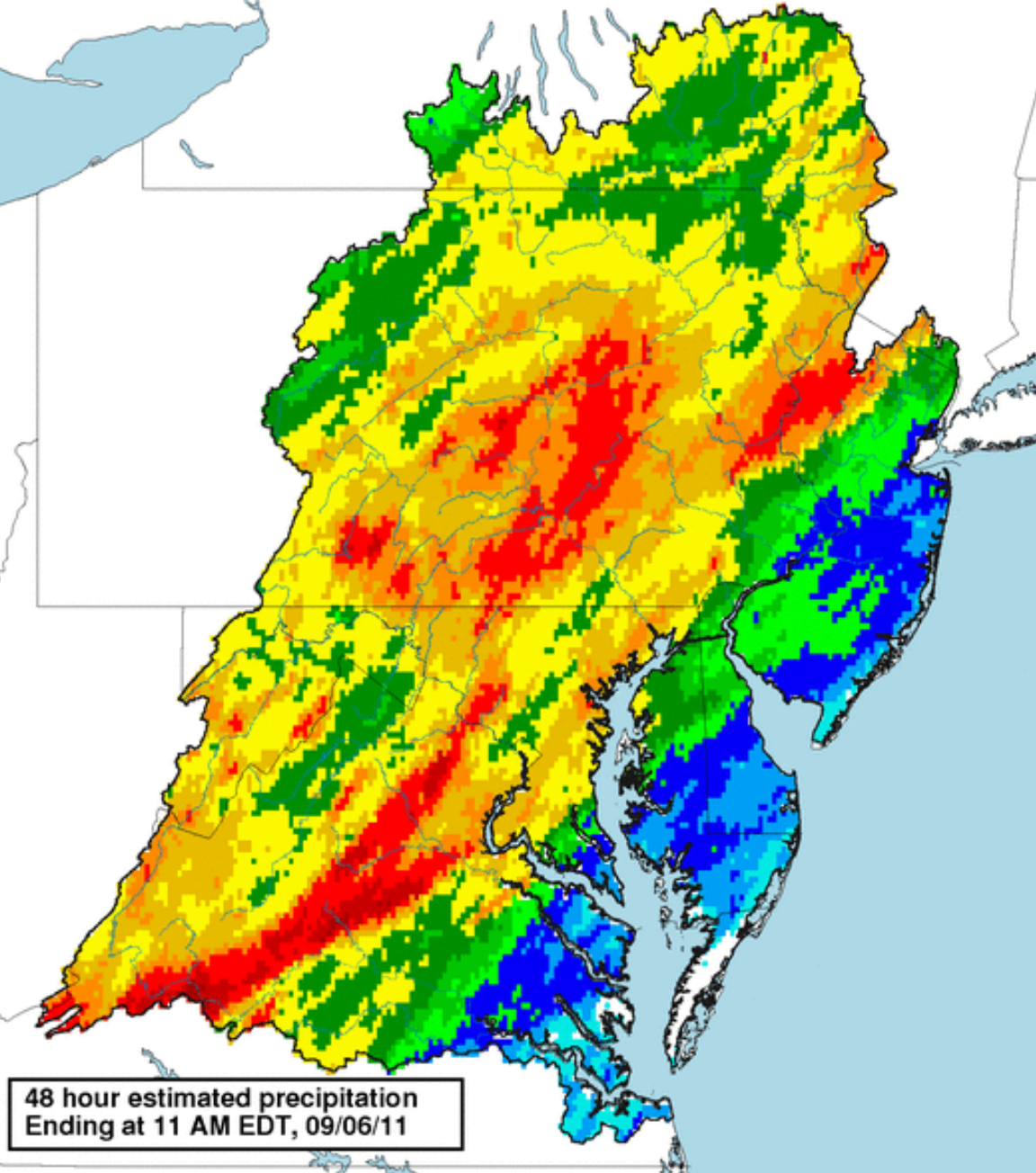


Executive Summary

- Heavy rainfall associated with remnants of Tropical Storm Lee will affect the region over the next several days.
- Small stream and poor drainage area flooding is likely
- Minor river flooding is likely
- Moderate river flooding is possible
- The threat of major river flooding has diminished
- See the following slides for additional information.
- Unless the threat of major river flooding significantly escalates, this will be the last briefing package
- Maintain situational awareness by monitoring our website at:
<http://weather.gov/phi>
- Contact information

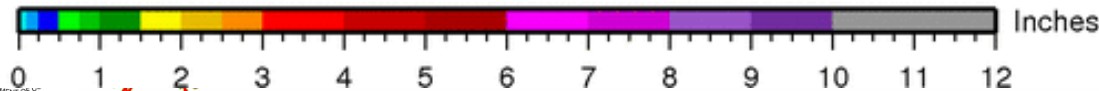
Gary Szatkowski – office 609-261-6602, ext. 222
cell 609-320-7205





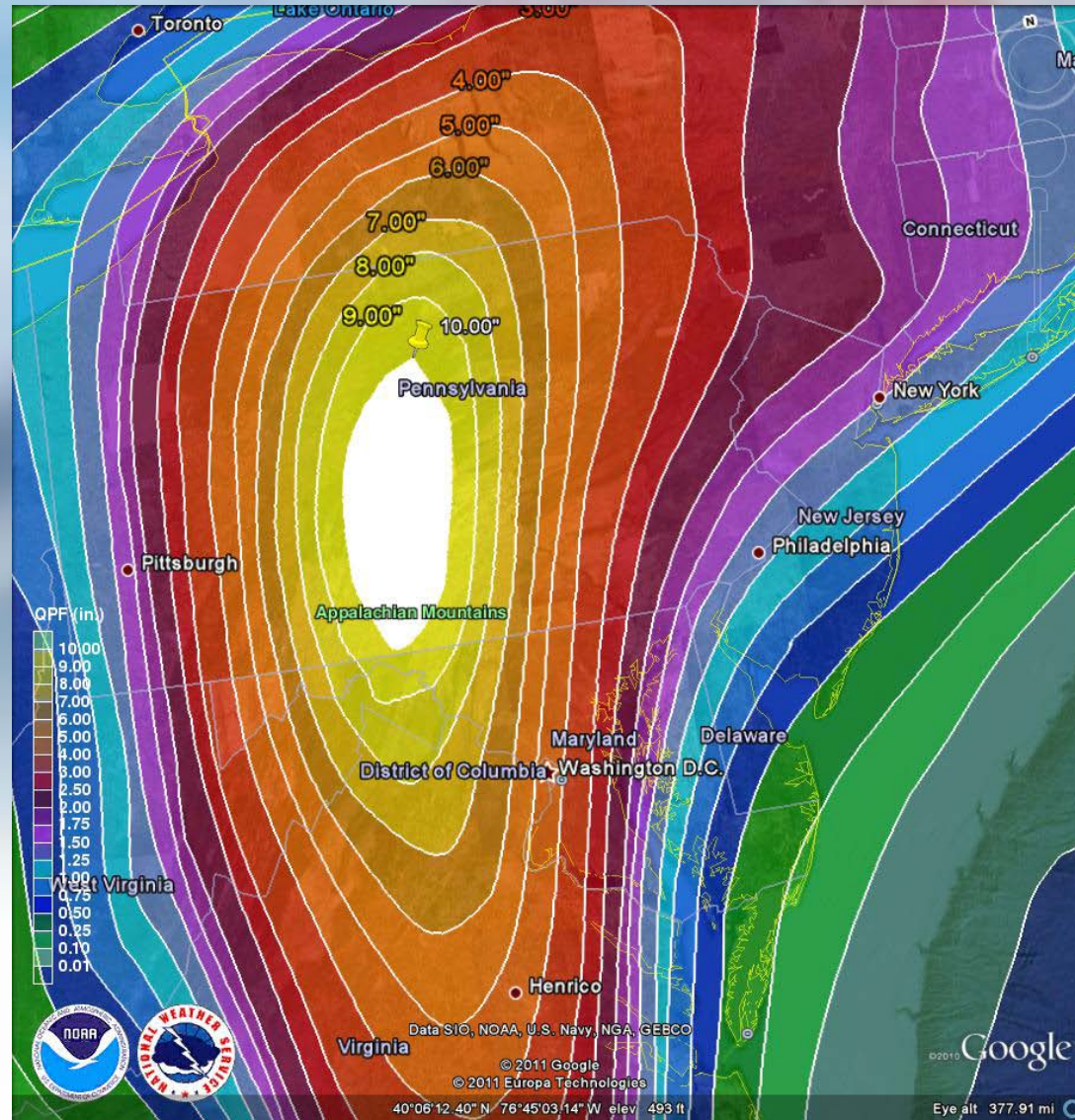
Rain on the ground already

- Rainfall total for the past **48 hours.**

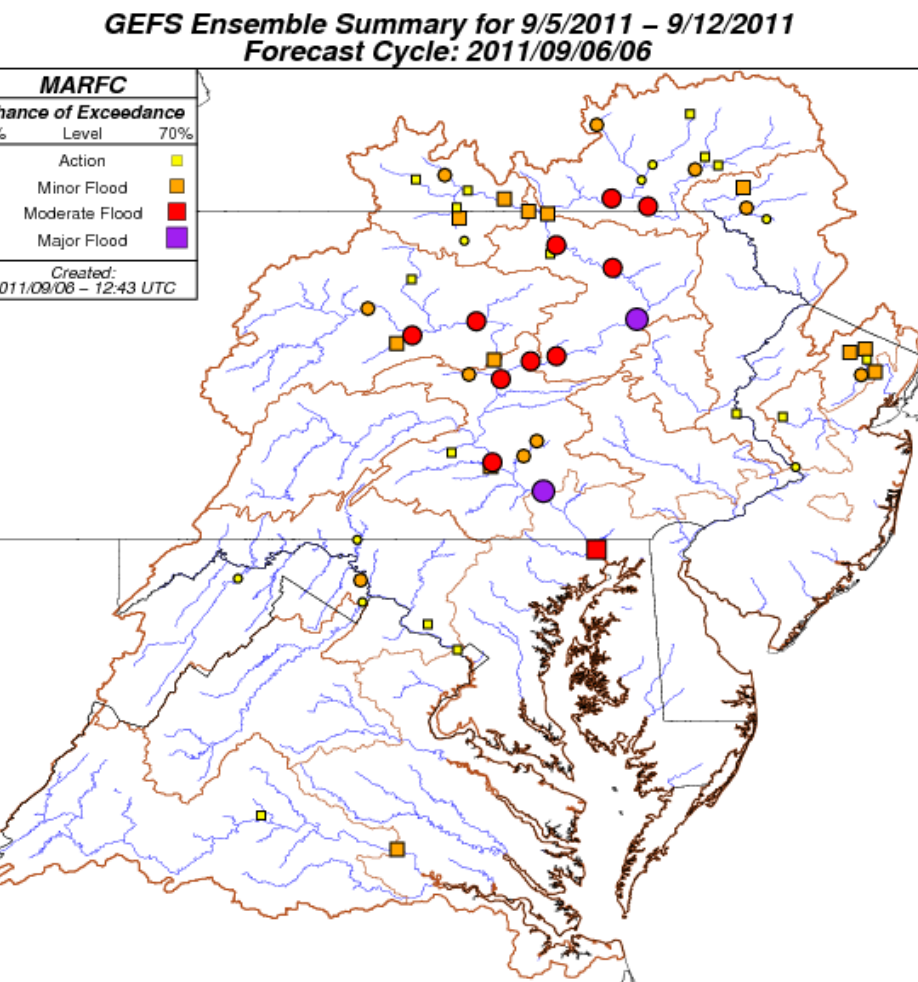


The problem – More Rainfall!

The graphic shows forecast rainfall totals over the next 72 hours – that is a 10+ inch rainfall maximum over central Pennsylvania

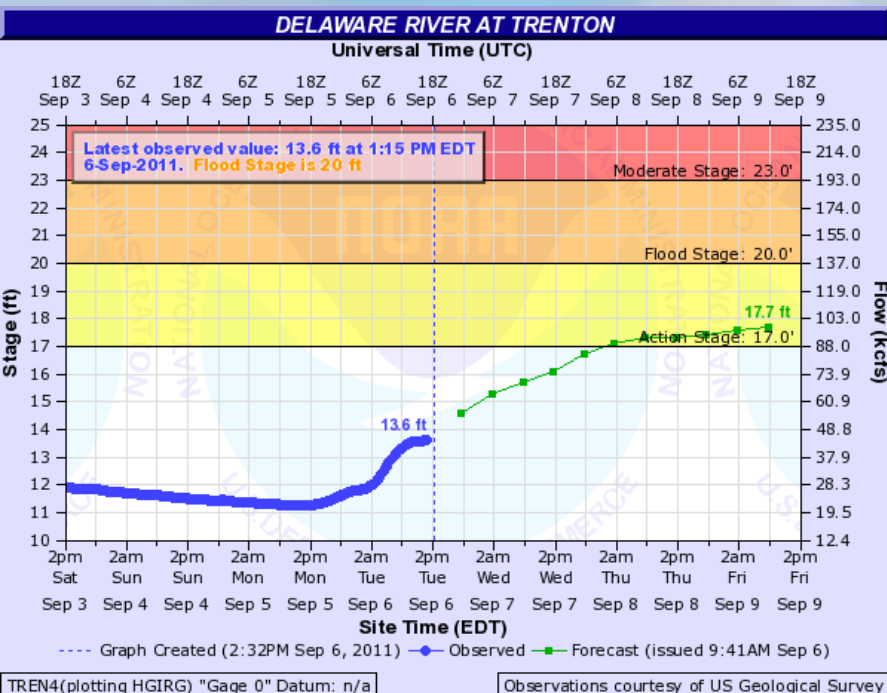


Our forecast tools - example



- The graphic shows one of the tools forecasters use to assess the flooding threat based on the expected rainfall
- Purple – threat of major flooding
- Red – threat of moderate flooding
- Orange – threat of minor flooding
- The threat of flooding in our forecast area has lessened compared to 24 hours ago. There is still a threat of minor river flooding in our area; the highest risk of moderate or major flooding in our area remains along the Susquehanna River in northeast Maryland.

Start using AHPS

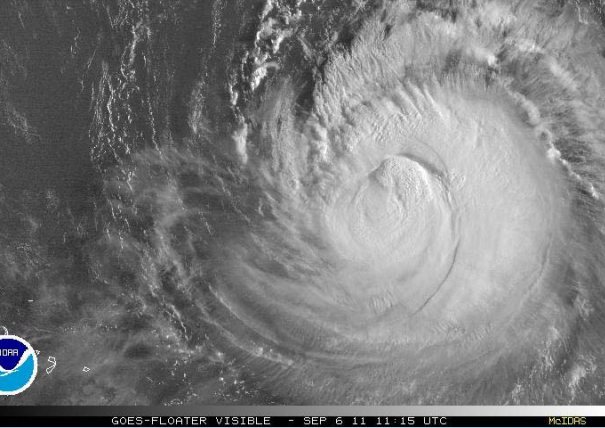


- As the event gets within range of our 48 to 72 hour forecasts on AHPS, you will get specific stage and crest timing. Forecasts are now on a 6 hour update cycle.
- Use the AHPS menu selection on the left hand side of our homepage to get the latest forecasts

Things to keep in mind

- Even a slight shift eastward of the heaviest precipitation will rapidly escalate the threat of both flash flooding and river flooding
- If the heavier rainfall moves eastward:
 - Flash flooding will develop
 - The threat of moderate or major river flooding will become more likely.
- Bottom line: Keep a close eye on the rainfall forecasts over the next two days

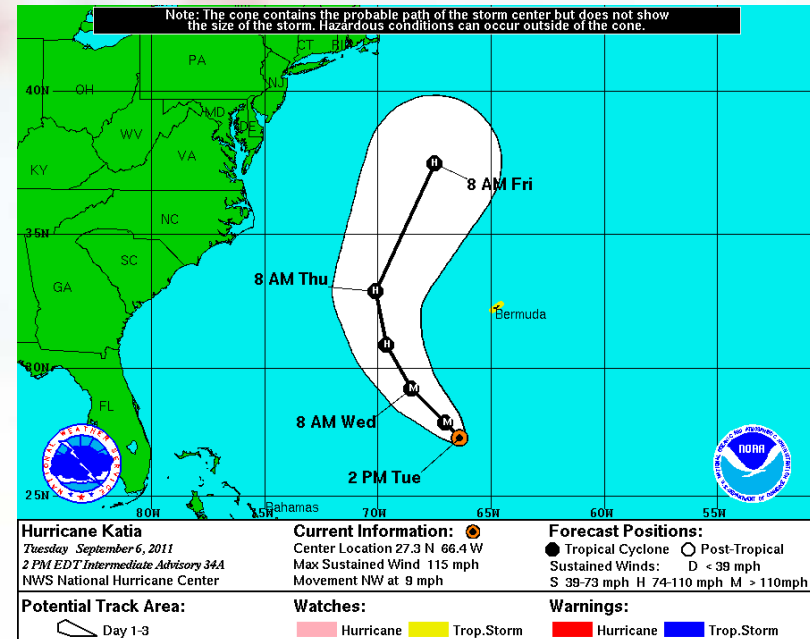




A Quick Update on Hurricane Katia

- Still a major hurricane
- Main impact on East Coast expected to be large swells and dangerous rip currents
- Maintain situational awareness of the latest National Hurricane Center forecast for the Hurricane at:

— www.nhc.noaa.gov



Questions?

- If you have any questions, please contact us.
- Gary.szatkowski@noaa.gov
- Office 609-261-6602 x222
- Cell 609-320-7205

