

November 1, 2017



LOCAL OFFICIALS MEETING

OCEAN DRIVE (CR 621) UPGRADES AND BRIDGE IMPROVEMENTS
LOCAL CONCEPT DEVELOPMENT STUDY

SOUTH JERSEY TRANSPORTATION PLANNING ORGANIZATION
CAPE MAY COUNTY



Michael Baker
INTERNATIONAL

AGENDA

- **WELCOME AND INTRODUCTIONS**
- **PROJECT OVERVIEW**
- **THE CONCEPT DEVELOPMENT PROCESS**
- **NEXT STEPS**



Michael Baker
INTERNATIONAL

PROJECT TEAM MEMBERS

SJTPO

Jennifer Marandino, P.E. – SJTPO Executive Director

Cape May County

Dale Foster, P.E. – Cape May County Project Manager

NJDOT

David Cihocki – NJDOT District 4 Local Aid Project Manager

Jim Sweet – NJDOT Environmental Project Manager

Cape May County Bridge Commission

Karen Coughlin – Executive Director of the Bridge Commission

Michael Baker International Team

Maher (Mike) Sidani, P.E., PMP – Baker Project Manager

James Yeager, P.E., PTP – Baker Deputy Project Manager

Joseph Romano, P.E. – Baker Structural Engineering Lead

Martin Wade, P.E. – Baker Project Engineer

Miguel Santiago, P.E. – WSP Project Engineer

Debbie Hartman, P.E. – WSP Outreach Coordinator

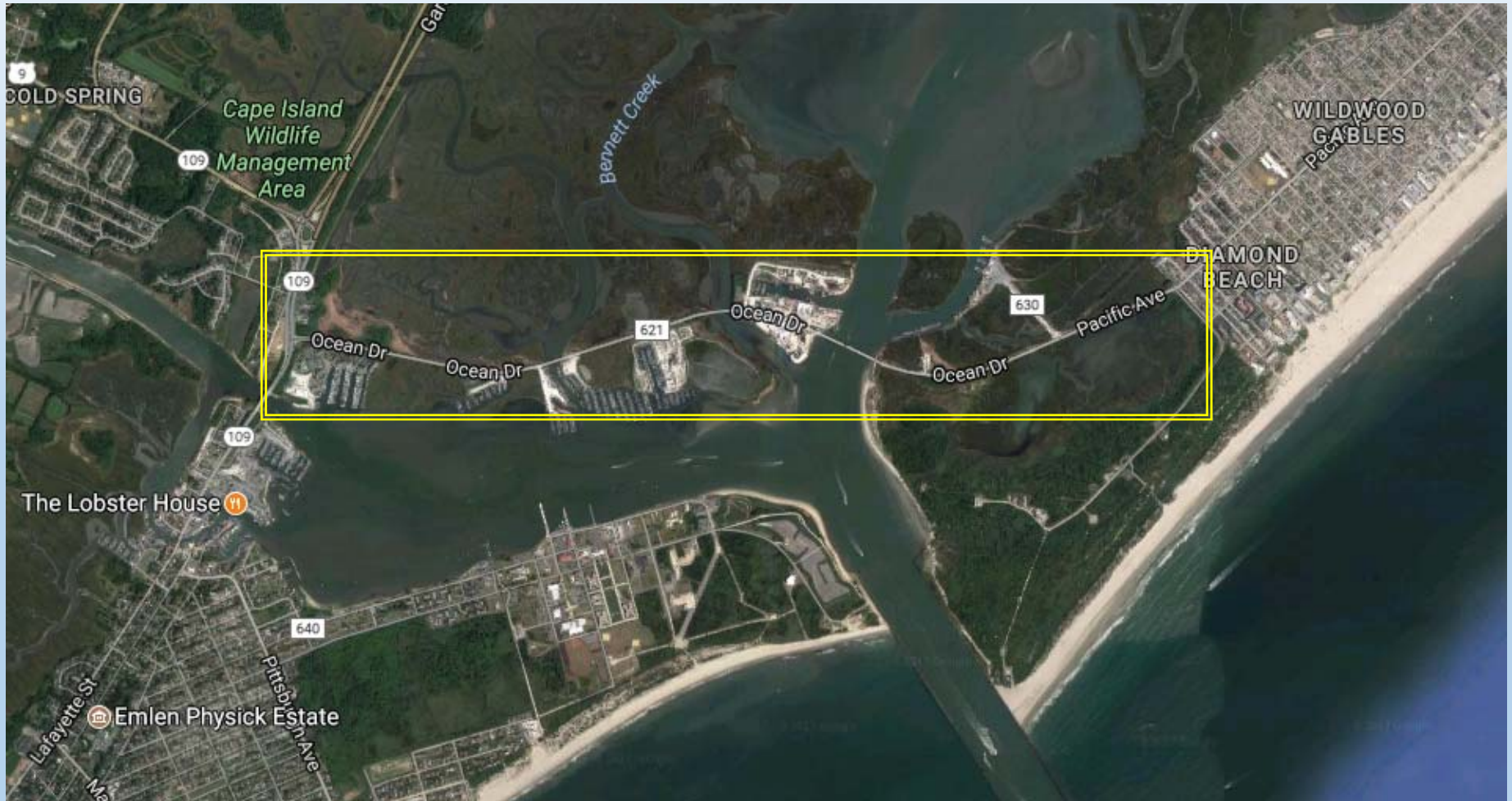
Steven Balzano – WSP Environmental Documentation

Churchill Consulting Engineers – Survey

Richard Grubb & Assoc. – Cultural Resources



PROJECT LOCATION – TWO MILE BRIDGE



Michael Baker
INTERNATIONAL

PROJECT DELIVERY PROCESS

Local Concept Development	Local Preliminary Engineering	Final Design/ Right of Way Acquisition	Construction
Purpose and Need Statement	Approved Design Exception Report	Construction Contract Documents, and Plans, Specs. & Estimates	Completed Construction
Data Collection and Environmental Screening Report	Cost Estimates (Final Design, Right of Way & Construction)	Environmental Reevaluations	As-Built
Selection of Preliminary Preferred Alternative (PPA)	Approved Environmental Document	Environmental Permits	Update and Finalize Design Communications Report
National Environmental Policy Act Classification	Approved Project Plan	Acquisition of Right of Way	Close-out Documentation
Concept Development Report	Preliminary Engineering Report	Update Design Communications Report	
Create Design Communications Report	Update Design Communications Report		



LOCAL CONCEPT DEVELOPMENT PHASE

1. Data Collection – Fall 2017

2. Document Existing Conditions and Develop Purpose & Need Statement – Winter 2017/2018

3. Develop Alternatives – Spring 2018

4. Analyze Alternatives – Summer 2018

5. Select PPA, Develop Plans, Documentation – Fall 2018

- Conduct Data Collection
- Identify Right of Way
- Identify Stakeholders
- Develop Public Involvement Action Plan



Michael Baker
INTERNATIONAL

LOCAL CONCEPT DEVELOPMENT PHASE

1. Data Collection – Fall 2017

2. Document Existing Conditions and Develop Purpose & Need Statement – Winter 2017/2018

3. Develop Alternatives – Spring 2018

4. Analyze Alternatives – Summer 2018

5. Select PPA, Develop Plans, Documentation – Fall 2018

- **Evaluate Deficiencies**
 - Utilities
 - Geotechnical
 - Stormwater Management
 - Traffic - Marine and Vehicular
 - Structural
 - Identify Substandard Design Elements
- **Identify Resources**
 - Environmental Screenings
 - Constraints Mapping
- Existing Conditions Documentation
- Local Officials Meeting
- Stakeholder Coordination Meeting
- Public Information Center
- Purpose and Need Statement



Michael Baker
INTERNATIONAL

LOCAL CONCEPT DEVELOPMENT PHASE

1. Data Collection – Fall 2017

2. Document Existing Conditions and
Develop Purpose & Need Statement
– Winter 2017/2018

3. Develop Alternatives – Spring 2018

4. Analyze Alternatives – Summer 2018

5. Select PPA, Develop Plans,
Documentation – Fall 2018

• Development of Alternatives



Michael Baker
INTERNATIONAL

LOCAL CONCEPT DEVELOPMENT PHASE

1. Data Collection – Fall 2017

2. Document Existing Conditions and Develop Purpose & Need Statement – Winter 2017/2018

3. Develop Alternatives – Spring 2018

4. Analyze Alternatives – Summer 2018

5. Select PPA, Develop Plans, Documentation – Fall 2018

- Alternatives Analysis & Documentation
- Local Officials Meeting
- Stakeholder Coordination Meeting
- Public Information Center
- Inter-Agency Review Committee Meeting



Michael Baker
INTERNATIONAL

LOCAL CONCEPT DEVELOPMENT PHASE

1. Data Collection – Fall 2017

2. Document Existing Conditions and Develop Purpose & Need Statement – Winter 2017/2018

3. Develop Alternatives – Spring 2018

4. Analyze Alternatives – Summer 2018

5. Select PPA, Develop Plans, Documentation – Fall 2018

- Select Preliminary Preferred Alternative
- Preliminary Preferred Alternative Cost Estimate
- Local Officials Meeting
- Stakeholder Coordination Meeting
- Public Information Center
- Obtain Resolutions of Support
- Concept Development Report



Michael Baker
INTERNATIONAL

DATA COLLECTION EFFORTS

- **Project Mapping**
 - Zoning
 - Tax
 - Soil
 - Flood Control
- Utilities
- Geodetic Surveys
- Bridge Evaluation Report
- Substandard Elements
- Americans with Disabilities Act (ADA) and Complete Streets
- Crash Data
- Traffic Data
- Bridge Operator's Logs



ENVIRONMENTAL PROCESS

- Environmental Screening
- NEPA Classification and Documentation
- Potential Environmental Agency Coordination
 - US Army Corps of Engineers Regulatory Program Philadelphia District
 - NJ Department of Environmental Protection including:
 - Division of Land Use Regulation
 - Division of Fish and Wildlife Endangered and Nongame Species Program
 - State Historic Preservation Office.
 - National Oceanic and Atmospheric Administration National Marine Fisheries Service
 - US Fish and Wildlife Service NJ Field Office and Cape May Wildlife Refuge
 - US Coast Guard Bridge Program District 5
 - US Environmental Protection Agency



BRIDGE INFORMATION

Three Bridges over Mill Creek, Upper Thorofare and Middle Thorofare. All were originally constructed in 1939.

Condition	Mill Creek	Upper Thorofare	Middle Thorofare
Bridge Sufficiency (out of 100)	47.3 (Functionally Obsolete)	34 (Structurally Deficient)	7 (Structurally Deficient)
Deck (scale of 1-9)	5 (Fair)	5 (Fair)	6 (Satisfactory)
Superstructure (scale of 1-9)	5 (Fair)	5 (Fair)	4 (Poor)
Substructure (scale of 1-9)	5 (Fair)	4 (Poor)	4 (Poor)
Inspection Year	2016	2016	2015



PUBLIC OUTREACH

Goals:

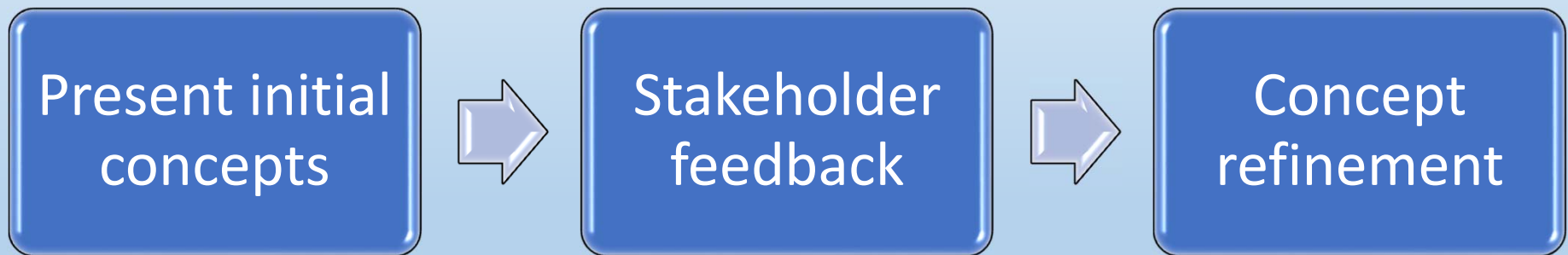
- Effective and broad engagement
- Meaningful public involvement
- Resolutions of Support



Michael Baker
INTERNATIONAL

GOALS

The Public Outreach Approach is ITERATIVE



Michael Baker
INTERNATIONAL

NEXT STEPS

**Local Officials Meeting 2,
Community Stakeholders Meeting 1, and Public Information Center 1
Existing Conditions and Purpose and Need
Winter 2017-2018**

**Local Officials Meeting 3,
Community Stakeholders Meeting 2, Public Information Center 2
Alternatives Evaluation
Summer 2018**

**Final Local Officials Meeting,
Final Community Stakeholders Meeting, Final Public Information Center
Presentation of Preliminary Preferred Alternative
Fall 2018**

**Resolution Of Support Will Be Requested From:
City of Cape May, Lower Township, Borough of Wildwood Crest,
City of Wildwood and Cape May County**



Michael Baker
INTERNATIONAL